

Product datasheet for PH301512

SEC22L2 (SEC22A) (NM_012430) Human Mass Spec Standard

Product data:

Product Type:	Mass Spec Standards
Description:	SEC22A MS Standard C13 and N15-labeled recombinant protein (NP_036562)
Species:	Human
Expression Host:	HEK293
Expression cDNA Clone or AA Sequence:	RC201512
Predicted MW:	34.9 kDa
Protein Sequence:	<p>>RC201512 protein sequence</p> <p>Red=Cloning site Green=Tags(s)</p> <p>MSMILSASVIRVRDGLPLSASTDYEQSTGMQECRKYFKMLSRKLAQLPDRCTLKTGHYNINFISLGVSY MMLCTENYPNVLAFLDELQKEFITTNNMMKTNNTAVRPYCFIEFDNFIQRTKQRYNNPRSLSTKINLSD MQTEIKLRPPYQISMCELGSAVTSVDFCKGAGKISSAHQRLPATLSGIVGFILSLCGALNLIRG FHAIESLLQSDGDDFNIIAFLGTAACLYQCYLLVYYTGWRNVKSFLTGLICLCNMYLYELRNWLQFL FHVTVGAFVTLQIWLRLQAQGKAPDYDV</p> <p>TRTRPLEQKLISEEDLAANDILDYKDDDDKV</p>
Tag:	C-Myc/DDK
Purity:	> 80% as determined by SDS-PAGE and Coomassie blue staining
Concentration:	>0.05 µg/µL as determined by microplate BCA method
Labeling Method:	Labeled with [U- ¹³ C ₆ , ¹⁵ N ₄]-L-Arginine and [U- ¹³ C ₆ , ¹⁵ N ₂]-L-Lysine
Buffer:	25 mM Tris-HCl, 100 mM glycine, pH 7.3
Storage:	Store at -80°C. Avoid repeated freeze-thaw cycles.
Stability:	Stable for 3 months from receipt of products under proper storage and handling conditions.
RefSeq:	<u>NP_036562</u>
RefSeq Size:	3429
RefSeq ORF:	921
Synonyms:	SEC22L2
Locus ID:	26984


[View online »](#)

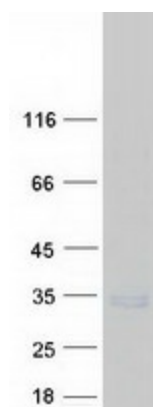
UniProt ID: [Q96IW7](#)

Cytogenetics: 3q21.1

Summary: The protein encoded by this gene belongs to the member of the SEC22 family of vesicle trafficking proteins. This protein has similarity to rat SEC22 and may act in the early stages of the secretory pathway. [provided by RefSeq, Nov 2008]

Protein Families: Transmembrane

Product images:



Coomassie blue staining of purified SEC22A protein (Cat# [TP301512]). The protein was produced from HEK293T cells transfected with SEC22A cDNA clone (Cat# [RC201512]) using MegaTran 2.0 (Cat# [TT210002]).