

Product datasheet for PH301510

NXT1 (NM_013248) Human Mass Spec Standard

Product data:

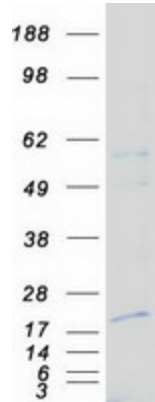
Product Type:	Mass Spec Standards
Description:	NXT1 MS Standard C13 and N15-labeled recombinant protein (NP_037380)
Species:	Human
Expression Host:	HEK293
Expression cDNA Clone or AA Sequence:	RC201510
Predicted MW:	15.8 kDa
Protein Sequence:	>RC201510 protein sequence Red=Cloning site Green=Tags(s) MASVDFKTYVDQACRAAEFVNYYTTMDKRRRLLSRLYMGATLVWNGNAVSGQESLSEFFEMLPSEF QISVVDQCQPVHDEATPSQTTLVVICGSVKFEGNKQRDFNQNFILTAQASPSNTVWIKIASDCFRFQDWS TRTRPLEQKLISEEDLAANDILDYKDDDDKV
Tag:	C-Myc/DDK
Purity:	> 80% as determined by SDS-PAGE and Coomassie blue staining
Concentration:	>0.05 µg/µL as determined by microplate BCA method
Labeling Method:	Labeled with [U- 13C6, 15N4]-L-Arginine and [U- 13C6, 15N2]-L-Lysine
Buffer:	25 mM Tris-HCl, 100 mM glycine, pH 7.3
Storage:	Store at -80°C. Avoid repeated freeze-thaw cycles.
Stability:	Stable for 3 months from receipt of products under proper storage and handling conditions.
RefSeq:	<u>NP_037380</u>
RefSeq Size:	1176
RefSeq ORF:	420
Synonyms:	MTR2; P15
Locus ID:	29107
UniProt ID:	<u>Q9UKK6</u>
Cytogenetics:	20p11.21



[View online »](#)

Summary:

The protein encoded by this gene is located in the nuclear envelope. It has protein similarity to nuclear transport factor 2. This protein functions as a nuclear export factor in both RAN (Ras-related nuclear protein)- and CRM1 (required for chromosome region maintenance)-dependent pathways. It is found to stimulate the export of U1 snRNA in RAN- and CRM1-dependent pathways and the export of tRNA and mRNA in a CRM1-independent pathway. The encoded protein heterodimerizes with Tap protein and may regulate the ability of Tap protein to mediate nuclear mRNA export. The use of alternate polyadenylation sites has been found for this gene. [provided by RefSeq, Jul 2008]

Product images:

Coomassie blue staining of purified NXT1 protein (Cat# [TP301510]). The protein was produced from HEK293T cells transfected with NXT1 cDNA clone (Cat# [RC201510]) using MegaTran 2.0 (Cat# [TT210002]).