

Product datasheet for PH301500

OXSM (NM_017897) Human Mass Spec Standard

Product data:

Product Type:	Mass Spec Standards
Description:	OXSM MS Standard C13 and N15-labeled recombinant protein (NP_060367)
Species:	Human
Expression Host:	HEK293
Expression cDNA Clone or AA Sequence:	RC201500
Predicted MW:	48.8 kDa
Protein Sequence:	>RC201500 protein sequence Red=Cloning site Green=Tags(s)

MSNCLQNFLKITSRLLCSRLCQQLRSKRKFFGTVPISRLHRRVVITGIGLVTPLGVGTHLVWDRIGGE
SGIVSLVGEYKSI PCSVAAYVPRGSDEGQFNEQNFVSKSDIKSMSSPTIMAIGAAELAMKDSGWHQPSE
ADQVATGVAIGMGMIPLEVVSETALNFQTKGYNKVSPPFVPKILVNMAAGQVSIRYKLGPNHAVSTACT
TGAHAVGDSFRFIAHGADVMVAGGTDSCISPLSLAGFSRARALSTNSDPKLACRPFHPKRDFVMGEGA
AVLVLEEYEHAVQRRARIYAEVLGYGLSGDAGHITAPDPEGEGALRCMAAALKDAGVQPEEISYINAHAT
STPLGDAENKAIKHLFKDHAYALAVSSTKGATGHLLGAAGAVEAAFTTLACYQKLPPTLNLDCEPEF
DLNYPVPLKAQEWKTEKRF IGLTNSFGFGGTNATLCIAGL

TRTRPLEQKLI SEEDLAANDILDYKDDDDKV

Tag:	C-Myc/DDK
Purity:	> 80% as determined by SDS-PAGE and Coomassie blue staining
Concentration:	>0.05 µg/µL as determined by microplate BCA method
Labeling Method:	Labeled with [U- ¹³ C ₆ , ¹⁵ N ₄]-L-Arginine and [U- ¹³ C ₆ , ¹⁵ N ₂]-L-Lysine
Buffer:	25 mM Tris-HCl, 100 mM glycine, pH 7.3
Storage:	Store at -80°C. Avoid repeated freeze-thaw cycles.
Stability:	Stable for 3 months from receipt of products under proper storage and handling conditions.
RefSeq:	<u>NP_060367</u>
RefSeq Size:	1537
RefSeq ORF:	1377
Synonyms:	CEM1; FASN2D; KASI; KS



[View online »](#)

Locus ID: 54995

UniProt ID: [Q9NWU1](#)

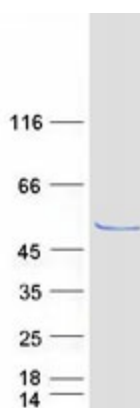
Cytogenetics: 3p24.2

Summary: This gene encodes a beta-ketoacyl synthetase. The encoded enzyme is required for elongation of fatty acid chains in the mitochondria. Alternatively spliced transcript variants have been described.[provided by RefSeq, Feb 2009]

Protein Families: Druggable Genome

Protein Pathways: Fatty acid biosynthesis, Metabolic pathways

Product images:



Coomassie blue staining of purified OXSM protein (Cat# [TP301500]). The protein was produced from HEK293T cells transfected with OXSM cDNA clone (Cat# [RC201500]) using MegaTran 2.0 (Cat# [TT210002]).