

Product datasheet for PH301486

ERLEC1 (NM_015701) Human Mass Spec Standard

Product data:

Product Type:	Mass Spec Standards
Description:	ERLEC1 MS Standard C13 and N15-labeled recombinant protein (NP_056516)
Species:	Human
Expression Host:	HEK293
Expression cDNA Clone or AA Sequence:	RC201486
Predicted MW:	54.9 kDa
Protein Sequence:	>RC201486 protein sequence Red=Cloning site Green=Tags(s)

MEEGGGVRS LVPGGPVLLVLCGLLEASGGGRALPQLSDDIPFRVNWPGTEFSLPTTGVLVKEDNYVIMT
TAHKEKYKILPLVTSGDDEEEKDYKGNPRELLEPLFKQSSCSYRIESYWYEVCHGKHIRQYHEEKET
GQKINIHEYYLGNMLAKNLLFEKEREAEKEKSNEIPTKNI EQMTPYYPVGMNGTPCSLKQNRPRSST
VMYICHPE SKHEILSVAEVTTC EYEVVILTPLLCSHPKYRFRASPVNDIFCQSLPGSPFKPLTLRQLEQQ
EELRVPFRNK EEDLQSTKEERFPAIHK SIAIGSQPVLTVGTTHISKLTDDQLIKEFLSGSYCFRGGVG
WWKYEF CYGKHVHQYHEDKDSGKTSVVVGTWNQEEHIEWAKKNTARAYHLQDDGTQTVRMVSHFYGNNDI
CDITDKPRQVTVKLKCKESDSPHAVTVYMLEPHSCQYIILGVESPICKILDTADENGLLSLPN

TRTRPLEQKLI SEEDLAANDILDYKDDDDKV

Tag:	C-Myc/DDK
Purity:	> 80% as determined by SDS-PAGE and Coomassie blue staining
Concentration:	>0.05 µg/µL as determined by microplate BCA method
Labeling Method:	Labeled with [U- ¹³ C ₆ , ¹⁵ N ₄]-L-Arginine and [U- ¹³ C ₆ , ¹⁵ N ₂]-L-Lysine
Buffer:	25 mM Tris-HCl, 100 mM glycine, pH 7.3
Storage:	Store at -80°C. Avoid repeated freeze-thaw cycles.
Stability:	Stable for 3 months from receipt of products under proper storage and handling conditions.
RefSeq:	<u>NP_056516</u>
RefSeq Size:	2605
RefSeq ORF:	1449
Synonyms:	C2orf30; CIM; CL24936; CL25084; HEL117; XTP3-B; XTP3TPB



[View online »](#)

Locus ID: 27248

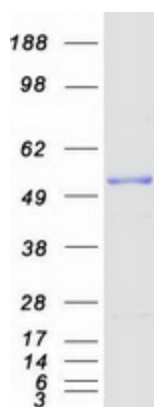
UniProt ID: [Q96DZ1](#), [V9HWD3](#)

Cytogenetics: 2p16.2

Summary: This gene encodes a resident endoplasmic reticulum (ER) protein that functions in N-glycan recognition. This protein is thought to be involved in ER-associated degradation via its interaction with the membrane-associated ubiquitin ligase complex. It also functions as a regulator of multiple cellular stress-response pathways in a manner that promotes metastatic cell survival. Alternative splicing results in multiple transcript variants. A related pseudogene has been identified on chromosome 21. [provided by RefSeq, Aug 2011]

Protein Families: Secreted Protein

Product images:



Coomassie blue staining of purified ERLEC1 protein (Cat# [TP301486]). The protein was produced from HEK293T cells transfected with ERLEC1 cDNA clone (Cat# [RC201486]) using MegaTran 2.0 (Cat# [TT210002]).