

Product datasheet for PH301472

SPCS1 (NM_014041) Human Mass Spec Standard

Product data:

Product Type:	Mass Spec Standards
Description:	SPCS1 MS Standard C13 and N15-labeled recombinant protein (NP_054760)
Species:	Human
Expression Host:	HEK293
Expression cDNA Clone or AA Sequence:	RC201472
Predicted MW:	12 kDa
Protein Sequence:	>RC201472 protein sequence Red =Cloning site Green =Tags(s) MLEHLSSLPTQMDYKGGKLAEQMFQGIILFSAIVGFIYGYVAEQFGWTVYIVMAGFAFSCLAQLTLPPWP IYRRHPLKWLVPVQESSTDDKKPGERKIKRHAKNN TRTRPLEQKLISEEDLAANDILDYKDDDDKV
Tag:	C-Myc/DDK
Purity:	> 80% as determined by SDS-PAGE and Coomassie blue staining
Concentration:	>0.05 µg/µL as determined by microplate BCA method
Labeling Method:	Labeled with [U- ¹³ C ₆ , ¹⁵ N ₄]-L-Arginine and [U- ¹³ C ₆ , ¹⁵ N ₂]-L-Lysine
Buffer:	25 mM Tris-HCl, 100 mM glycine, pH 7.3
Storage:	Store at -80°C. Avoid repeated freeze-thaw cycles.
Stability:	Stable for 3 months from receipt of products under proper storage and handling conditions.
RefSeq:	NP_054760
RefSeq Size:	1100
RefSeq ORF:	312
Synonyms:	HSPC033; SPC1; SPC12; YJR010C-A
Locus ID:	28972
UniProt ID:	Q9Y6A9
Cytogenetics:	3p21.1

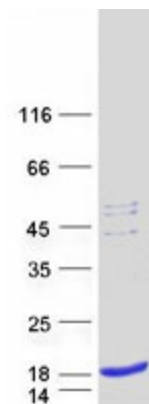


[View online »](#)

Summary: Component of the microsomal signal peptidase complex which removes signal peptides from nascent proteins as they are translocated into the lumen of the endoplasmic reticulum. [UniProtKB/Swiss-Prot Function]

Protein Families: Protease, Transmembrane

Product images:



Coomassie blue staining of purified SPCS1 protein (Cat# [TP301472]). The protein was produced from HEK293T cells transfected with SPCS1 cDNA clone (Cat# [RC201472]) using MegaTran 2.0 (Cat# [TT210002]).