

Product datasheet for PH301461

BRP44L (MPC1) (NM_016098) Human Mass Spec Standard

Product data:

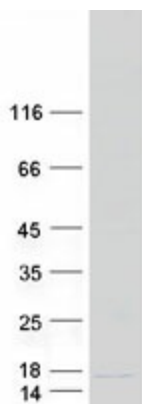
Product Type:	Mass Spec Standards
Description:	BRP44L MS Standard C13 and N15-labeled recombinant protein (NP_057182)
Species:	Human
Expression Host:	HEK293
Expression cDNA Clone or AA Sequence:	RC201461
Predicted MW:	12.3 kDa
Protein Sequence:	>RC201461 protein sequence Red=Cloning site Green=Tags(s) MAGALVRKAADYVRSKDFRDYLMSTHFWGPVANWGLPIAAINDMKKSPEIISGRMTFALCCYSLTFMRFA YKVQPRNWLLFACHATNEVAQLIQGGRLIKHEMTKTASA TRTRPLEQKLISEEDLAANDILDYKDDDDKV
Tag:	C-Myc/DDK
Purity:	> 80% as determined by SDS-PAGE and Coomassie blue staining
Concentration:	>0.05 µg/µL as determined by microplate BCA method
Labeling Method:	Labeled with [U- 13C6, 15N4]-L-Arginine and [U- 13C6, 15N2]-L-Lysine
Buffer:	25 mM Tris-HCl, 100 mM glycine, pH 7.3
Storage:	Store at -80°C. Avoid repeated freeze-thaw cycles.
Stability:	Stable for 3 months from receipt of products under proper storage and handling conditions.
RefSeq:	NP_057182
RefSeq Size:	977
RefSeq ORF:	327
Synonyms:	BRP44L; CGI-129; MPYCD; SLC54A1
Locus ID:	51660
UniProt ID:	Q9Y5U8
Cytogenetics:	6q27



[View online »](#)

Summary:

The protein encoded by this gene is part of an MPC1/MPC2 heterodimer that is responsible for transporting pyruvate into mitochondria. The encoded protein is found in the inner mitochondrial membrane. Defects in this gene are a cause of mitochondrial pyruvate carrier deficiency. Several transcript variants, some protein coding and one non-protein coding, have been found for this gene. [provided by RefSeq, Aug 2012]

Product images:

Coomassie blue staining of purified MPC1 protein (Cat# [TP301461]). The protein was produced from HEK293T cells transfected with MPC1 cDNA clone (Cat# [RC201461]) using MegaTran 2.0 (Cat# [TT210002]).