

## Product datasheet for PH301456

### ILKAP (NM\_030768) Human Mass Spec Standard

#### Product data:

Product Type:	Mass Spec Standards
Description:	ILKAP MS Standard C13 and N15-labeled recombinant protein (NP_110395)
Species:	Human
Expression Host:	HEK293
Expression cDNA Clone or AA Sequence:	RC201456
Predicted MW:	42.9 kDa
Protein Sequence:	>RC201456 protein sequence Red=Cloning site Green=Tags(s)

MDLFGDLPEPERSPRPAAGKEAQKGPLLFDDLPPASSTDGSGGPLLFDLPPASSGDSGLATSISQMV  
KTEGKGAKRKTSEEEKNGSEELVEKKVCKASSVIFGLKGYVAERKGEREEMQDAHVILNDITECRPPSS  
LITRVSYFAVFDGHGGIRASKFAAQNHLHQNLRKFKPGDVISVEKTVKRCLLDTFKHTDEEFLKQASSQK  
PAWKDSTATCVLAVDNILYIANLGDRAILCRYNEESQKHAALSLSKEHNPTQYEERMRIQKAGGNVRD  
GRVLGVLEVSRSIGDGQYKRCGVTSVPDIRRCQLTPNDRFILLACDGLFKVFTPEEAVNFILSCLEDEKI  
QTREGKSAADARYEAACNRLANKAVQRGSADNVTVMVVRIGH

TRTRPLEQKLI SEEDLAANDILDYKDDDDKV

Tag:	C-Myc/DDK
Purity:	> 80% as determined by SDS-PAGE and Coomassie blue staining
Concentration:	>0.05 µg/µL as determined by microplate BCA method
Labeling Method:	Labeled with [U- <sup>13</sup> C <sub>6</sub> , <sup>15</sup> N <sub>4</sub> ]-L-Arginine and [U- <sup>13</sup> C <sub>6</sub> , <sup>15</sup> N <sub>2</sub> ]-L-Lysine
Buffer:	25 mM Tris-HCl, 100 mM glycine, pH 7.3
Storage:	Store at -80°C. Avoid repeated freeze-thaw cycles.
Stability:	Stable for 3 months from receipt of products under proper storage and handling conditions.
RefSeq:	<u><a href="#">NP_110395</a></u>
RefSeq Size:	1480
RefSeq ORF:	1176
Synonyms:	ILKAP2; ILKAP3; PP2C-DELTA; PP2CD; PPM10
Locus ID:	80895



[View online »](#)

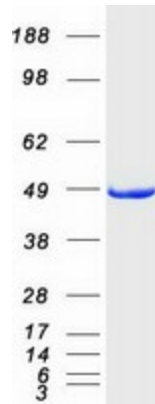
UniProt ID: [Q9H0C8](#)

Cytogenetics: 2q37.3

**Summary:** The protein encoded by this gene is a protein serine/threonine phosphatase of the PP2C family. This protein can interact with integrin-linked kinase (ILK/ILK1), a regulator of integrin mediated signaling, and regulate the kinase activity of ILK. Through the interaction with ILK, this protein may selectively affect the signaling process of ILK-mediated glycogen synthase kinase 3 beta (GSK3beta), and thus participate in Wnt signaling pathway. [provided by RefSeq, Jul 2008]

**Protein Families:** Druggable Genome, Phosphatase

### Product images:



Coomassie blue staining of purified ILKAP protein (Cat# [TP301456]). The protein was produced from HEK293T cells transfected with ILKAP cDNA clone (Cat# [RC201456]) using MegaTran 2.0 (Cat# [TT210002]).