

## Product datasheet for PH301448

### MRPL38 (NM\_032478) Human Mass Spec Standard

#### Product data:

Product Type:	Mass Spec Standards
Description:	MRPL38 MS Standard C13 and N15-labeled recombinant protein (NP_115867)
Species:	Human
Expression Host:	HEK293
Expression cDNA Clone or AA Sequence:	RC201448
Predicted MW:	44.4 kDa
Protein Sequence:	>RC201448 representing NM_032478 Red=Cloning site Green=Tags(s)  MPNSDIDL SNLERLEKYRSFDRYRRRAEQEAQAPHWWRTYREYFGEKTDPKKEIDIGLPPPKVSRTQQL ERKQAIQELRANVEEERAARLRTASVPLDAVRAEWERTCGPYHKQRLAEYYGLYRDLFHGATFVPRVPLH VAYAVGEDDLMPVYCGNEVTPTEAAQAPEVTYEAEEGSLWTLTLLTSLDGHLLPDAEYLHWLLTNIPGNR VAEGQVTCPYLPPFPARGSGIHLAFLLFKQDQPIDFSEDARSPCYQLAQRTRFRTDFYKHKHQTMTPA GLSFFQCRWDDSVTYIFHQLLDMREPVFEFVRPPPYHPKQKRFPHRQPLRYLDYRDSHEPTYGIY  TRTRPLEQKLI SEEDLAANDILDYKDDDDKV
Tag:	C-Myc/DDK
Purity:	> 80% as determined by SDS-PAGE and Coomassie blue staining
Concentration:	>0.05 µg/µL as determined by microplate BCA method
Labeling Method:	Labeled with [U- <sup>13</sup> C <sub>6</sub> , <sup>15</sup> N <sub>4</sub> ]-L-Arginine and [U- <sup>13</sup> C <sub>6</sub> , <sup>15</sup> N <sub>2</sub> ]-L-Lysine
Buffer:	25 mM Tris-HCl, 100 mM glycine, pH 7.3
Storage:	Store at -80°C. Avoid repeated freeze-thaw cycles.
Stability:	Stable for 3 months from receipt of products under proper storage and handling conditions.
RefSeq:	<u><a href="#">NP_115867</a></u>
RefSeq Size:	1907
RefSeq ORF:	1038
Synonyms:	HSPC262; L38MT; MRP-L3; MRP-L38; RPML3
Locus ID:	64978



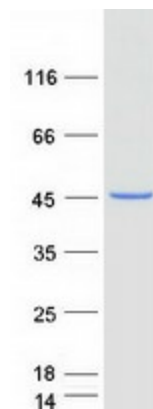
[View online »](#)

UniProt ID: [Q96DV4](#)

Cytogenetics: 17q25.1

**Summary:** Mammalian mitochondrial ribosomal proteins are encoded by nuclear genes and help in protein synthesis within the mitochondrion. Mitochondrial ribosomes (mitoribosomes) consist of a small 28S subunit and a large 39S subunit. They have an estimated 75% protein to rRNA composition compared to prokaryotic ribosomes, where this ratio is reversed. Another difference between mammalian mitoribosomes and prokaryotic ribosomes is that the latter contain a 5S rRNA. Among different species, the proteins comprising the mitoribosome differ greatly in sequence, and sometimes in biochemical properties, which prevents easy recognition by sequence homology. This gene encodes a 39S subunit protein. [provided by RefSeq, Jul 2008]

### Product images:



Coomassie blue staining of purified MRPL38 protein (Cat# [TP301448]). The protein was produced from HEK293T cells transfected with MRPL38 cDNA clone (Cat# [RC201448]) using MegaTran 2.0 (Cat# [TT210002]).