

Product datasheet for PH301447

RILPL2 (NM_145058) Human Mass Spec Standard

Product data:

Product Type:	Mass Spec Standards
Description:	RILPL2 MS Standard C13 and N15-labeled recombinant protein (NP_659495)
Species:	Human
Expression Host:	HEK293
Expression cDNA Clone or AA Sequence:	RC201447
Predicted MW:	24 kDa
Protein Sequence:	>RC201447 protein sequence Red=Cloning site Green=Tags(s) MEEPPVREEEEEEGEEDERDEVGPEGALGKSPFQLTAEDVYDISYLLGRELMALGSDPRVTQLQFKVVR VLEMLEALVNEGSLALEELKMERDHLRKEVEGLRRQSPASGEVNLGPNKMVVDL TDPNRPRTLQELRD VLQERNKLSQLLVVQEELQCYKSGLIIPREGPGRREKDAVVTSAKNAGRNKEEKTI IKLFFFRSGKQ T TRTRPLEQKLI SEEDLAANDILDYKDDDDKV
Tag:	C-Myc/DDK
Purity:	> 80% as determined by SDS-PAGE and Coomassie blue staining
Concentration:	>0.05 µg/µL as determined by microplate BCA method
Labeling Method:	Labeled with [U- ¹³ C ₆ , ¹⁵ N ₄]-L-Arginine and [U- ¹³ C ₆ , ¹⁵ N ₂]-L-Lysine
Buffer:	25 mM Tris-HCl, 100 mM glycine, pH 7.3
Storage:	Store at -80°C. Avoid repeated freeze-thaw cycles.
Stability:	Stable for 3 months from receipt of products under proper storage and handling conditions.
RefSeq:	NP_659495
RefSeq Size:	1435
RefSeq ORF:	633
Synonyms:	RLP2
Locus ID:	196383
UniProt ID:	Q969X0

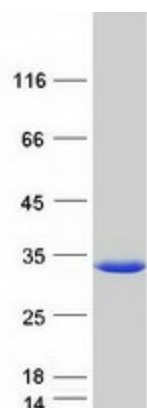


[View online »](#)

Cytogenetics: 12q24.31

Summary: This gene encodes a protein that contains a rab-interacting lysosomal protein-like domain. This protein may be involved in regulating lysosome morphology. This protein may also be a target for the Hepatitis C virus and assist in viral replication. Alternate splicing results in multiple transcript variants. [provided by RefSeq, Jan 2015]

Product images:



Coomassie blue staining of purified RILPL2 protein (Cat# [TP301447]). The protein was produced from HEK293T cells transfected with RILPL2 cDNA clone (Cat# [RC201447]) using MegaTran 2.0 (Cat# [TT210002]).