

Product datasheet for PH301437

SDHAF2 (NM_017841) Human Mass Spec Standard

Product data:

Product Type:	Mass Spec Standards
Description:	SDHAF2 MS Standard C13 and N15-labeled recombinant protein (NP_060311)
Species:	Human
Expression Host:	HEK293
Expression cDNA Clone or AA Sequence:	RC201437
Predicted MW:	19.6 kDa
Protein Sequence:	>RC201437 protein sequence Red=Cloning site Green=Tags(s) MAVSTVFSTSSLMLALSRHLLSPLLSVTSFRRFYRGDSPTDSQKDMIEIPLPPWQERTDESIETKRARL LYESRKRGMLENCILLSLFAKEHLQHMTEKQLNLYDRLINEPSNDWDIYYWATEAKPAPEIFENEVMALL RDFAKNKNKEQRLRAPDLEYLFEKPR TRTRPLEQKLI SEEDLAANDILDYKDDDDKV
Tag:	C-Myc/DDK
Purity:	> 80% as determined by SDS-PAGE and Coomassie blue staining
Concentration:	>0.05 µg/µL as determined by microplate BCA method
Labeling Method:	Labeled with [U- 13C6, 15N4]-L-Arginine and [U- 13C6, 15N2]-L-Lysine
Buffer:	25 mM Tris-HCl, 100 mM glycine, pH 7.3
Storage:	Store at -80°C. Avoid repeated freeze-thaw cycles.
Stability:	Stable for 3 months from receipt of products under proper storage and handling conditions.
RefSeq:	<u>NP_060311</u>
RefSeq Size:	1227
RefSeq ORF:	498
Synonyms:	C11orf79; PGL2; SDH5
Locus ID:	54949
UniProt ID:	<u>Q9NX18</u>

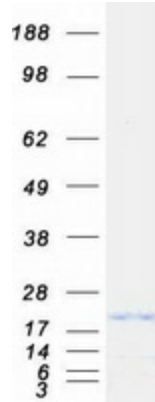


[View online »](#)

Cytogenetics: 11q12.2

Summary: This gene encodes a mitochondrial protein needed for the flavination of a succinate dehydrogenase complex subunit required for activity of the complex. Mutations in this gene are associated with paraganglioma.[provided by RefSeq, Jul 2010]

Product images:



Coomassie blue staining of purified SDHAF2 protein (Cat# [TP301437]). The protein was produced from HEK293T cells transfected with SDHAF2 cDNA clone (Cat# [RC201437]) using MegaTran 2.0 (Cat# [TT210002]).