

Product datasheet for PH301425

PSF3 (GINS3) (NM_022770) Human Mass Spec Standard

Product data:

Product Type:	Mass Spec Standards
Description:	GINS3 MS Standard C13 and N15-labeled recombinant protein (NP_073607)
Species:	Human
Expression Host:	HEK293
Expression cDNA Clone or AA Sequence:	RC201425
Predicted MW:	24.5 kDa
Protein Sequence:	>RC201425 protein sequence Red=Cloning site Green=Tags(s) MSEAYFRVESGALGPEENFLSLDDILMSHEKLPVRTETAMPRLGAFFLERSAGAETDNAVPOGSKLELPL WLAKGLFDNKRRILSVELPKIYQEGWRTVFSADPNVVDLHKMGPHFYGFQSLLHFDSPENADISQSLQ TFIGRFRIMDSSQNAYNEDTSALVARLDEMERGLFQTGQKGLNDFQCWEKGQASQITASNLVQNYKKRK FTDMED TRTRPLEQKLI SEEDLAANDILDYKDDDDKV
Tag:	C-Myc/DDK
Purity:	> 80% as determined by SDS-PAGE and Coomassie blue staining
Concentration:	>0.05 µg/µL as determined by microplate BCA method
Labeling Method:	Labeled with [U- ¹³ C ₆ , ¹⁵ N ₄]-L-Arginine and [U- ¹³ C ₆ , ¹⁵ N ₂]-L-Lysine
Buffer:	25 mM Tris-HCl, 100 mM glycine, pH 7.3
Storage:	Store at -80°C. Avoid repeated freeze-thaw cycles.
Stability:	Stable for 3 months from receipt of products under proper storage and handling conditions.
RefSeq:	NP_073607
RefSeq Size:	2297
RefSeq ORF:	648
Synonyms:	PSF3
Locus ID:	64785
UniProt ID:	Q9BRX5 , A0A0S2Z5L0

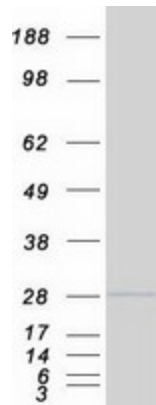


[View online »](#)

Cytogenetics: 16q21

Summary: This gene encodes a protein subunit of the GINS heterotetrameric complex, which is essential for the initiation of DNA replication and replisome progression in eukaryotes. Alternatively spliced transcript variants encoding distinct isoforms have been described. [provided by RefSeq, Jul 2008]

Product images:



Coomassie blue staining of purified GINS3 protein (Cat# [TP301425]). The protein was produced from HEK293T cells transfected with GINS3 cDNA clone (Cat# [RC201425]) using MegaTran 2.0 (Cat# [TT210002]).