

Product datasheet for PH301415

NPDC1 (NM_015392) Human Mass Spec Standard

Product data:

| | |
|---------------------------------------|--|
| Product Type: | Mass Spec Standards |
| Description: | NPDC1 MS Standard C13 and N15-labeled recombinant protein (NP_056207) |
| Species: | Human |
| Expression Host: | HEK293 |
| Expression cDNA Clone or AA Sequence: | RC201415 |
| Predicted MW: | 34.5 kDa |
| Protein Sequence: | >RC201415 protein sequence Red=Cloning site Green=Tags(s) MATPLPPSPRHLRLLRLLLSGLVLGAALRGAAAGHPDVAACPGSLDCALKRRARCPPGAHACGPCLQPF QEDQQGLCVPRMRPPGGGRQPRLDEIDFLAQELARKESGHSTPPLPKDRQRLPEPATLGF SARGQGL ELGLPSTPGTPTPTHTSLGSPVSSDPVHMSPLEPRGGQDGLALVLILAF CVAGAAALSVASLCWCRLQ REIRLTQKADYATAKAPGSPAAPRISPGDQRLAQAEMYHYQHQRQMLCLERHKPEPKELDTASSDEEN EDGDFTVYECPLAPTGEMEVNPLFDHAAL SAPLPAPSSPPALP TRTRPLEQKLI SEEDLAANDILDYKDDDDKV |
| Tag: | C-Myc/DDK |
| Purity: | > 80% as determined by SDS-PAGE and Coomassie blue staining |
| Concentration: | >0.05 µg/µL as determined by microplate BCA method |
| Labeling Method: | Labeled with [U- ¹³ C ₆ , ¹⁵ N ₄]-L-Arginine and [U- ¹³ C ₆ , ¹⁵ N ₂]-L-Lysine |
| Buffer: | 25 mM Tris-HCl, 100 mM glycine, pH 7.3 |
| Storage: | Store at -80°C. Avoid repeated freeze-thaw cycles. |
| Stability: | Stable for 3 months from receipt of products under proper storage and handling conditions. |
| RefSeq: | <u>NP_056207</u> |
| RefSeq Size: | 1548 |
| RefSeq ORF: | 975 |
| Synonyms: | CAB; CAB-; CAB-1; CAB1; NPDC-1 |
| Locus ID: | 56654 |



[View online »](#)

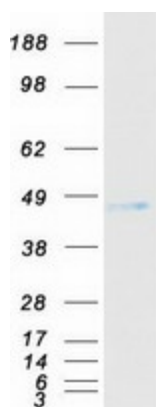
UniProt ID: [Q9NQX5](#)

Cytogenetics: 9q34.3

Summary: Suppresses oncogenic transformation in neural and non-neural cells and down-regulates neural cell proliferation. Might be involved in transcriptional regulation (By similarity).
[UniProtKB/Swiss-Prot Function]

Protein Families: Transmembrane

Product images:



Coomassie blue staining of purified NPDC1 protein (Cat# [TP301415]). The protein was produced from HEK293T cells transfected with NPDC1 cDNA clone (Cat# [RC201415]) using MegaTran 2.0 (Cat# [TT210002]).