

## Product datasheet for PH301414

### FCRLM1 (FCRLA) (NM\_032738) Human Mass Spec Standard

#### Product data:

Product Type:	Mass Spec Standards
Description:	FCRLA MS Standard C13 and N15-labeled recombinant protein (NP_116127)
Species:	Human
Expression Host:	HEK293
Expression cDNA Clone or AA Sequence:	RC201414
Predicted MW:	40.6 kDa
Protein Sequence:	>RC201414 protein sequence Red=Cloning site Green=Tags(s)
	MLKKISVGVAGDLNVTMKLGCVLMAWALYLSLGVLWVAQMLLAASFETLQCEGPVCTEESCHTEDDLT DAREAGFQVKAYTFSEPFHLIVSYDWLILQGPAKPVFEGDLLVLRCAWQDWPLTQVTFYRDGSALGPPG PNREFSITVVQKADSGHYHCSGIFQSPGPGIPETASVVAITVQELFPAPILRAVPSAEPQAGSPMTLSCQ TKLPLQRSAAARLLFSFYKDGRIVQSRGLSSEFQIPTASEDHSGSYWCEAATEDNQVWKQSPQLEIRVQGA SSSAAPPTLNAPQKSAAPGTAPEEAPGPLPPPPTPSSSEDPGSSPLGMPDPLHYQMGLLLKHMQDVRV LLGHLLMELRELSGHQKPGTTKATAE
	TRTRPLEQKLI SEEDLAANDILDYKDDDDKV
Tag:	C-Myc/DDK
Purity:	> 80% as determined by SDS-PAGE and Coomassie blue staining
Concentration:	>0.05 µg/µL as determined by microplate BCA method
Labeling Method:	Labeled with [U- <sup>13</sup> C <sub>6</sub> , <sup>15</sup> N <sub>4</sub> ]-L-Arginine and [U- <sup>13</sup> C <sub>6</sub> , <sup>15</sup> N <sub>2</sub> ]-L-Lysine
Buffer:	25 mM Tris-HCl, 100 mM glycine, pH 7.3
Storage:	Store at -80°C. Avoid repeated freeze-thaw cycles.
Stability:	Stable for 3 months from receipt of products under proper storage and handling conditions.
RefSeq:	<u>NP_116127</u>
RefSeq Size:	2357
RefSeq ORF:	1128
Synonyms:	FCRL; FCRL1; FCRLb; FCRLc1; FCRLc2; FCRLd; FCRLe; FCRLM1; FCRLX; FCRX; FREB
Locus ID:	84824



[View online »](#)

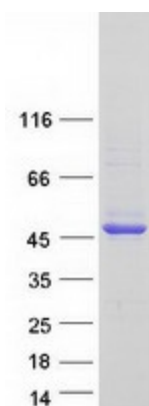
UniProt ID: [Q7L513](#), [Q6MZF2](#)

Cytogenetics: 1q23.3

**Summary:** This gene encodes a protein similar to receptors for the Fc fragment of gamma immunoglobulin (IgG). These receptors, referred to as FCGRs, mediate the destruction of IgG-coated antigens and of cells induced by antibodies. This encoded protein is selectively expressed in B cells, and may be involved in their development. This protein may also be involved in the development of lymphomas. Multiple alternatively spliced transcript variants that encode different protein isoforms have been described for this gene. [provided by RefSeq, Aug 2011]

**Protein Families:** Secreted Protein, Transmembrane

### Product images:



Coomassie blue staining of purified FCRLA protein (Cat# [TP301414]). The protein was produced from HEK293T cells transfected with FCRLA cDNA clone (Cat# [RC201414]) using MegaTran 2.0 (Cat# [TT210002]).