

Product datasheet for PH301409

RITA (RITA1) (NM_032848) Human Mass Spec Standard

Product data:

Product Type:	Mass Spec Standards
Description:	C12orf52 MS Standard C13 and N15-labeled recombinant protein (NP_116237)
Species:	Human
Expression Host:	HEK293
Expression cDNA Clone or AA Sequence:	RC201409
Predicted MW:	28.4 kDa
Protein Sequence:	>RC201409 representing NM_032848 Red=Cloning site Green=Tags(s) MKTPELVAVSGMQTLGLQHRCRGGYRVKARTSYVDETLFGSPAGTRPTPPDFDPPWVEKANRTRGVGKEA SKALGAKGSCETTPSRGSTPTLTPRKKNKYRPISSHPSYCDESLFGSRSEGASFGAPRMAGDAAKLRAL LWTPPPTPRGSHSPRPREAPLRAIHPAGPSKTEPGAADSQKLSMGGLHSSRPLKRGLSHSLTHLNPST GHPATSAPHTNGPQDLRPSTSGVTFRSPLVTSRARSVSI SVPSTPRRGATQKPKPPWK TRTRPLEQKLI SEEDLAANDILDYKDDDDKV
Tag:	C-Myc/DDK
Purity:	> 80% as determined by SDS-PAGE and Coomassie blue staining
Concentration:	>0.05 µg/µL as determined by microplate BCA method
Labeling Method:	Labeled with [U- ¹³ C ₆ , ¹⁵ N ₄]-L-Arginine and [U- ¹³ C ₆ , ¹⁵ N ₂]-L-Lysine
Buffer:	25 mM Tris-HCl, 100 mM glycine, pH 7.3
Storage:	Store at -80°C. Avoid repeated freeze-thaw cycles.
Stability:	Stable for 3 months from receipt of products under proper storage and handling conditions.
RefSeq:	NP_116237
RefSeq Size:	1775
RefSeq ORF:	807
Synonyms:	C12orf52; RITA
Locus ID:	84934
UniProt ID:	Q96K30 , A0A024RBL1

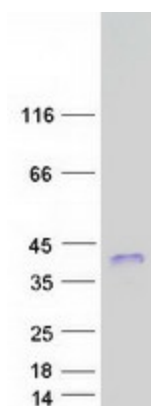


[View online »](#)

Cytogenetics: 12q24.13

Summary: Tubulin-binding protein that acts as a negative regulator of Notch signaling pathway. Shuttles between the cytoplasm and the nucleus and mediates the nuclear export of RBPJ/RBPSUH, thereby preventing the interaction between RBPJ/RBPSUH and NICD product of Notch proteins (Notch intracellular domain), leading to down-regulate Notch-mediated transcription. May play a role in neurogenesis.[UniProtKB/Swiss-Prot Function]

Product images:



Coomassie blue staining of purified RITA1 protein (Cat# [TP301409]). The protein was produced from HEK293T cells transfected with RITA1 cDNA clone (Cat# [RC201409]) using MegaTran 2.0 (Cat# [TT210002]).