

Product datasheet for PH301391

EIF4EL3 (EIF4E2) (NM_004846) Human Mass Spec Standard

Product data:

Product Type:	Mass Spec Standards
Description:	EIF4E2 MS Standard C13 and N15-labeled recombinant protein (NP_004837)
Species:	Human
Expression Host:	HEK293
Expression cDNA Clone or AA Sequence:	RC201391
Predicted MW:	28.4 kDa
Protein Sequence:	>RC201391 protein sequence Red=Cloning site Green=Tags(s) MNNKFDALKDDDDSGDHDQNEENSTQKDGEKEKTERDKNQSSSKRKA VVPGPAEHPLQYNYTFWYSRRTPG RPTSSQSYEQNIKQIGTFASVEQFWRFYSHMVRPGDLTGHSDFHLFKEGIKPMWEDDANKNGGKWIIRLR KGLASRCWENLILAMLGEQFMVGEEICGAVVSVRFQEDIISIWNKTASDQATTARIRDTLRRVNLNLPNT IMEYKTHTDTSIKMPGRLGPQRLLFQNLWKPRLNVP TRTRPLEQKLI SEEDLAANDILDYKDDDDKV
Tag:	C-Myc/DDK
Purity:	> 80% as determined by SDS-PAGE and Coomassie blue staining
Concentration:	>0.05 µg/µL as determined by microplate BCA method
Labeling Method:	Labeled with [U- ¹³ C ₆ , ¹⁵ N ₄]-L-Arginine and [U- ¹³ C ₆ , ¹⁵ N ₂]-L-Lysine
Buffer:	25 mM Tris-HCl, 100 mM glycine, pH 7.3
Storage:	Store at -80°C. Avoid repeated freeze-thaw cycles.
Stability:	Stable for 3 months from receipt of products under proper storage and handling conditions.
RefSeq:	NP_004837
RefSeq Size:	1078
RefSeq ORF:	735
Synonyms:	4E-LP; 4EHP; EIF4EL3; h4EHP; IF4e
Locus ID:	9470
UniProt ID:	O60573 , Q53RG0



[View online »](#)

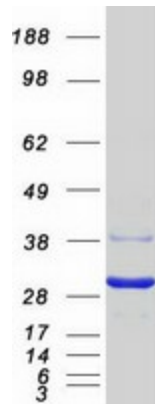
Cytogenetics: 2q37.1

Summary: Recognizes and binds the 7-methylguanosine-containing mRNA cap during an early step in the initiation (PubMed:9582349, PubMed:17368478, PubMed:25624349). Acts as a repressor of translation initiation (PubMed:22751931). In contrast to EIF4E, it is unable to bind eIF4G (EIF4G1, EIF4G2 or EIF4G3), suggesting that it acts by competing with EIF4E and block assembly of eIF4F at the cap (By similarity).[UniProtKB/Swiss-Prot Function]

Protein Families: Transcription Factors

Protein Pathways: Insulin signaling pathway, mTOR signaling pathway

Product images:



Coomassie blue staining of purified EIF4E2 protein (Cat# [TP301391]). The protein was produced from HEK293T cells transfected with EIF4E2 cDNA clone (Cat# [RC201391]) using MegaTran 2.0 (Cat# [TT210002]).