

Product datasheet for PH301389

YIPF2 (NM_024029) Human Mass Spec Standard

Product data:

Product Type:	Mass Spec Standards
Description:	YIPF2 MS Standard C13 and N15-labeled recombinant protein (NP_076934)
Species:	Human
Expression Host:	HEK293
Expression cDNA Clone or AA Sequence:	RC201389
Predicted MW:	35.2 kDa
Protein Sequence:	>RC201389 protein sequence Red =Cloning site Green =Tags(s) MASADELTFHEFEEATNLLADTPDAATTSRSDQLTPQGHVAVAVGSGGSYGAEDEVEEESDKAALLQEQQ QQQQPGFWTFSSYYQSFFDVDTSQVLDRIKGSLLPRPGHNFVRHHLRNRPDLYGPFWICATLAFVLAVTGN LTLVLAQRDPDSIHYSPPQFHKVTVAGISIIYCYAWLVPLALWGFLRWRKGVQERMGPYTFLETVCIIYGYSL FVFIPMVVLWLPVPWLQWLFGALALGLSAAGLVFTLWPVVREDTRLVATVLLSVVLLHALLAMGCKLY FFQSLPPENVAPPPQITSLPSNIALSPTLPQSLAPS TRTRPLEQKLISEEDLAANDILDYKDDDDKV
Tag:	C-Myc/DDK
Purity:	> 80% as determined by SDS-PAGE and Coomassie blue staining
Concentration:	>0.05 µg/µL as determined by microplate BCA method
Labeling Method:	Labeled with [U- ¹³ C ₆ , ¹⁵ N ₄]-L-Arginine and [U- ¹³ C ₆ , ¹⁵ N ₂]-L-Lysine
Buffer:	25 mM Tris-HCl, 100 mM glycine, pH 7.3
Storage:	Store at -80°C. Avoid repeated freeze-thaw cycles.
Stability:	Stable for 3 months from receipt of products under proper storage and handling conditions.
RefSeq:	NP_076934
RefSeq Size:	1554
RefSeq ORF:	948
Synonyms:	FinGER2
Locus ID:	78992



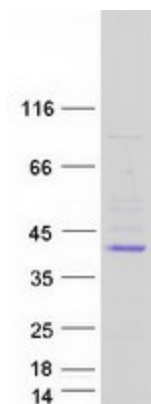
[View online »](#)

UniProt ID: [Q9BWQ6](#), [A0A024R7E1](#)

Cytogenetics: 19p13.2

Protein Families: Transmembrane

Product images:



Coomassie blue staining of purified YIPF2 protein (Cat# [TP301389]). The protein was produced from HEK293T cells transfected with YIPF2 cDNA clone (Cat# [RC201389]) using MegaTran 2.0 (Cat# [TT210002]).