

Product datasheet for PH301386

SESN2 (NM_031459) Human Mass Spec Standard

Product data:

Product Type:	Mass Spec Standards
Description:	SESN2 MS Standard C13 and N15-labeled recombinant protein (NP_113647)
Species:	Human
Expression Host:	HEK293
Expression cDNA Clone or AA Sequence:	RC201386
Predicted MW:	54.5 kDa
Protein Sequence:	>RC201386 protein sequence Red=Cloning site Green=Tags(s)

MIVADSECR AELKDYLR FAPGGVGD SGPGE EQRESRARRGPRGPSAFIPVEEVLREGAESLEQHLGLEAL
MSSGRVDNLAVVMGLHPDYFTSFWR LHYLLHTDGPLASSWRHYIAIMAAARHQCSYLVGSHMAEFLQTG
GDPEWLLGLHRAPEKLRK LSEINKLLAHRPWLITKEHIQALLKTGEHTWSLAELIQALVLLTHCHSLSSF
VFGCGILPEGDADGSPAPQAPT PPSEQSSPPSRDPLNNSGGFESARDVEALMERMQQLQESLLRDEGTSQ
EEMESRFELEKSESLLVTPSADILEPSHPDMLCFVEDPTFGYEDFTRRGAQAPPTFRAQDYTWEDHGYS
LIQRLYPEGGQLLDEKFQAAYSLTYNTIAMHSGVDTSVLRRAIWNYYIHCVFGRYDDYDYGEVNQLLERN
LKVYIKTVACYPEKTRRMYNLFWRHRHSEKVVHVNLLLLLEARMQAALLYALRAITRYMT

TRTRPLEQKLI SEEDLAANDILDYKDDDDKV

Tag:	C-Myc/DDK
Purity:	> 80% as determined by SDS-PAGE and Coomassie blue staining
Concentration:	>0.05 µg/µL as determined by microplate BCA method
Labeling Method:	Labeled with [U- ¹³ C ₆ , ¹⁵ N ₄]-L-Arginine and [U- ¹³ C ₆ , ¹⁵ N ₂]-L-Lysine
Buffer:	25 mM Tris-HCl, 100 mM glycine, pH 7.3
Storage:	Store at -80°C. Avoid repeated freeze-thaw cycles.
Stability:	Stable for 3 months from receipt of products under proper storage and handling conditions.
RefSeq:	NP_113647
RefSeq Size:	3547
RefSeq ORF:	1440
Synonyms:	HI95; SES2; SEST2



[View online »](#)

Locus ID: 83667

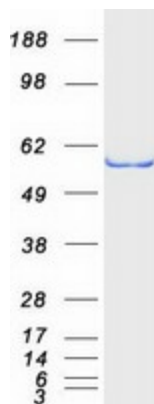
UniProt ID: [P58004](#)

Cytogenetics: 1p35.3

Summary: This gene encodes a member of the sestrin family of PA26-related proteins. The encoded protein may function in the regulation of cell growth and survival. This protein may be involved in cellular response to different stress conditions. [provided by RefSeq, Jul 2008]

Protein Pathways: p53 signaling pathway

Product images:



Coomassie blue staining of purified SESN2 protein (Cat# [TP301386]). The protein was produced from HEK293T cells transfected with SESN2 cDNA clone (Cat# [RC201386]) using MegaTran 2.0 (Cat# [TT210002]).