

Product datasheet for PH301377

AP2M1 (NM_001025205) Human Mass Spec Standard

Product data:

Product Type:	Mass Spec Standards
Description:	AP2M1 MS Standard C13 and N15-labeled recombinant protein (NP_001020376)
Species:	Human
Expression Host:	HEK293
Expression cDNA Clone or AA Sequence:	RC201377
Predicted MW:	49.2 kDa
Protein Sequence:	>RC201377 representing NM_001025205 Red=Cloning site Green=Tags(s)

MIGGLFIYNHKGEVLISRVRDDIGRNAVDAFRVNVIHARQQVRSPTNIARTSFFHVKRSNIWLAAVTK
QNVNAAMVFEFLYKMCVMAAYFGKISEENIKNNFVLIYELLDEILDGYPQNSSETGALKTFITQQGIKS
QHQTKEEQSQITSQVTGQIGWRREGIKYRRNELFLDVLESVNLLMSPQGQVLSAHVSGRVVMKSYLSGMP
ECKFGMNDKIVIEKQKGTADETSKSGKQSAIADDCTFHQCVRLSKFDSERSISFIPPDGEFELMRYRTT
KDIIILPFRVIPLVREVGRTKLEVKVVIKSNFKPSLLAQKIEVRIPTPLNTSGVQVICMKGAKYKASENA
IVWKIKRMAGMKESQISAEIELLPTNDKKKWARPPISMNFVFPFAPSGLKVRYLKVFEPKLNYSHDHVIK
WVRYIGRSGIYETRC

TRTRPLEQKLISEEDLAANDILDYKDDDDKV

Tag:	C-Myc/DDK
Purity:	> 80% as determined by SDS-PAGE and Coomassie blue staining
Concentration:	>0.05 µg/µL as determined by microplate BCA method
Labeling Method:	Labeled with [U- 13C6, 15N4]-L-Arginine and [U- 13C6, 15N2]-L-Lysine
Buffer:	25 mM Tris-HCl, 100 mM glycine, pH 7.3
Storage:	Store at -80°C. Avoid repeated freeze-thaw cycles.
Stability:	Stable for 3 months from receipt of products under proper storage and handling conditions.
RefSeq:	<u>NP_001020376</u>
RefSeq Size:	1952
RefSeq ORF:	1305
Synonyms:	AP50; CLAPM1; MRD60; mu2



[View online »](#)

Locus ID: 1173

UniProt ID: [Q96CW1](#)

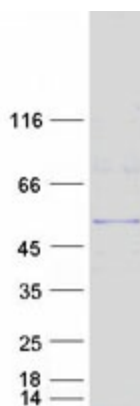
Cytogenetics: 3q27.1

Summary: This gene encodes a subunit of the heterotetrameric coat assembly protein complex 2 (AP2), which belongs to the adaptor complexes medium subunits family. The encoded protein is required for the activity of a vacuolar ATPase, which is responsible for proton pumping occurring in the acidification of endosomes and lysosomes. The encoded protein may also play an important role in regulating the intracellular trafficking and function of CTLA-4 protein. Three transcript variants encoding different isoforms have been found for this gene. [provided by RefSeq, Jul 2015]

Protein Families: Druggable Genome

Protein Pathways: Endocytosis, Huntington's disease

Product images:



Coomassie blue staining of purified AP2M1 protein (Cat# [TP301377]). The protein was produced from HEK293T cells transfected with AP2M1 cDNA clone (Cat# [RC201377]) using MegaTran 2.0 (Cat# [TT210002]).