

Product datasheet for PH301363

ARF5 (NM_001662) Human Mass Spec Standard

Product data:

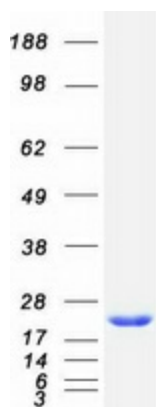
Product Type:	Mass Spec Standards
Description:	ARF5 MS Standard C13 and N15-labeled recombinant protein (NP_001653)
Species:	Human
Expression Host:	HEK293
Expression cDNA Clone or AA Sequence:	RC201363
Predicted MW:	20.5 kDa
Protein Sequence:	>RC201363 protein sequence Red=Cloning site Green=Tags(s) MGLTVSALFSRIFGKKQMRILMVGLDAAGKTTILYKLLKGEIVTTIPTIGFNVETVEYKNICFTVWDVGG QDKIRPLWRHYFQNTQGLIFVVDSDNRERVQESADELQKMLQEDELRDVLLVFANKQDMPNAMPVSELT DKLGLQHLRSRTWYVQATCATQGTGLYDGLDWLSHEL SKR TRTRPLEQKLI SEEDLAANDILDYKDDDDKV
Tag:	C-Myc/DDK
Purity:	> 80% as determined by SDS-PAGE and Coomassie blue staining
Concentration:	>0.05 µg/µL as determined by microplate BCA method
Labeling Method:	Labeled with [U- 13C6, 15N4]-L-Arginine and [U- 13C6, 15N2]-L-Lysine
Buffer:	25 mM Tris-HCl, 100 mM glycine, pH 7.3
Storage:	Store at -80°C. Avoid repeated freeze-thaw cycles.
Stability:	Stable for 3 months from receipt of products under proper storage and handling conditions.
RefSeq:	NP_001653
RefSeq Size:	1096
RefSeq ORF:	540
Locus ID:	381
UniProt ID:	P84085 , A4D0Z3
Cytogenetics:	7q32.1



[View online »](#)

Summary:

This gene is a member of the human ADP-ribosylation factor (ARF) gene family. These genes encode small guanine nucleotide-binding proteins that stimulate the ADP-ribosyltransferase activity of cholera toxin and play a role in vesicular trafficking and as activators of phospholipase D. The gene products include 6 ARF proteins and 11 ARF-like proteins and constitute 1 family of the RAS superfamily. The ARF proteins are categorized as class I (ARF1, ARF2, and ARF3), class II (ARF4 and ARF5) and class III (ARF6). The members of each class share a common gene organization. [provided by RefSeq, Dec 2010]

Product images:

Coomassie blue staining of purified ARF5 protein (Cat# [TP301363]). The protein was produced from HEK293T cells transfected with ARF5 cDNA clone (Cat# [RC201363]) using MegaTran 2.0 (Cat# [TT210002]).