

## Product datasheet for PH301345

### DOPA Decarboxylase (DDC) (NM\_000790) Human Mass Spec Standard

#### Product data:

Product Type:	Mass Spec Standards
Description:	DDC MS Standard C13 and N15-labeled recombinant protein (NP_000781)
Species:	Human
Expression Host:	HEK293
Expression cDNA Clone or AA Sequence:	RC201345
Predicted MW:	53.9 kDa
Protein Sequence:	>RC201345 protein sequence Red=Cloning site Green=Tags(s)

MNASEFRRRGKEMVDYVANYMEGIEGRQVYPDVEPGYLRPLIPAAAPQEPDTFEDIINDVEKIIMPGVTH  
WHSPYFFAYFPTASSYPAMLADMLCGAIGCIGFSAWASPACTELETVMMDWLKMLELPAFLNEKAGEG  
GGVIQGSASEATLVALLAARTKVIHRLQAASPELTQAAIMEKLVAYSSDQAHSSVERAGLIGGVKLAIP  
SDGNFAMRASALQEALERDKAAGLIPFFMVATLGTTCSSFDNLLVGPICNKEDIWLHVDAAAYAGSAFI  
CPEFRHLLNGVEFADSFNFNPHKWLLVNFDCSAMWVKRDTLTGAFRLDPTYLKHSHQDGLITDYRHWQ  
IPLGRRFRSLKMWVFRMYGVKGLQAYIRKRVQLSHEFESLVRQDPRFEICVEVILGLVCFRLKGSNKVN  
EALLQRINSAKKIHLVPCHLRDKFVLRFAICSRVESAHVQRAWEHIKELAADVLAERE

TRTRPLEQKLISEEDLAANDILDYKDDDDKV

Tag:	C-Myc/DDK
Purity:	> 80% as determined by SDS-PAGE and Coomassie blue staining
Concentration:	>0.05 µg/µL as determined by microplate BCA method
Labeling Method:	Labeled with [U- <sup>13</sup> C <sub>6</sub> , <sup>15</sup> N <sub>4</sub> ]-L-Arginine and [U- <sup>13</sup> C <sub>6</sub> , <sup>15</sup> N <sub>2</sub> ]-L-Lysine
Buffer:	25 mM Tris-HCl, 100 mM glycine, pH 7.3
Storage:	Store at -80°C. Avoid repeated freeze-thaw cycles.
Stability:	Stable for 3 months from receipt of products under proper storage and handling conditions.
RefSeq:	<a href="#">NP_000781</a>
RefSeq Size:	1975
RefSeq ORF:	1440
Synonyms:	AADC



[View online »](#)

Locus ID: 1644

UniProt ID: [P20711](#), [Q53Y41](#), [A0A0S2Z3N4](#)

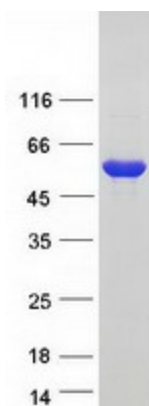
Cytogenetics: 7p12.2-p12.1

**Summary:** The encoded protein catalyzes the decarboxylation of L-3,4-dihydroxyphenylalanine (DOPA) to dopamine, L-5-hydroxytryptophan to serotonin and L-tryptophan to tryptamine. Defects in this gene are the cause of aromatic L-amino-acid decarboxylase deficiency (AADCD). AADCD deficiency is an inborn error in neurotransmitter metabolism that leads to combined serotonin and catecholamine deficiency. Multiple alternatively spliced transcript variants encoding different isoforms have been identified for this gene. [provided by RefSeq, Jun 2011]

**Protein Families:** Druggable Genome

**Protein Pathways:** Histidine metabolism, Metabolic pathways, Phenylalanine metabolism, Tryptophan metabolism, Tyrosine metabolism

### Product images:



Coomassie blue staining of purified DDC protein (Cat# [TP301345]). The protein was produced from HEK293T cells transfected with DDC cDNA clone (Cat# [RC201345]) using MegaTran 2.0 (Cat# [TT210002]).