

Product datasheet for PH301337

IFT20 (NM_174887) Human Mass Spec Standard

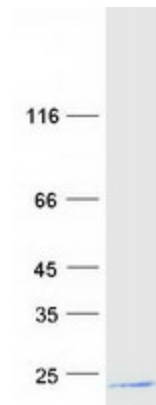
Product data:

Product Type:	Mass Spec Standards
Description:	IFT20 MS Standard C13 and N15-labeled recombinant protein (NP_777547)
Species:	Human
Expression Host:	HEK293
Expression cDNA Clone or AA Sequence:	RC201337
Predicted MW:	16 kDa
Protein Sequence:	<p>>RC201337 protein sequence</p> <p>Red=Cloning site Green=Tags(s)</p> <p>MAKDILGEAGLHFDELNKLRLVDPEVTQQTIELKEECKDFVDKIGQFQKIVGGLIELVDQLAKEAENEKM KSLAVSPRLECTGAISAHCKLCLSDSSDPTSPSRVGGTGHRCSELAQIYKAERSSTAATSSPNRKE NAARKVSG</p> <p>TRTRPLEQKLISEEDLAANDILDYKDDDDKV</p>
Tag:	C-Myc/DDK
Purity:	> 80% as determined by SDS-PAGE and Coomassie blue staining
Concentration:	>0.05 µg/µL as determined by microplate BCA method
Labeling Method:	Labeled with [U- ¹³ C ₆ , ¹⁵ N ₄]-L-Arginine and [U- ¹³ C ₆ , ¹⁵ N ₂]-L-Lysine
Buffer:	25 mM Tris-HCl, 100 mM glycine, pH 7.3
Storage:	Store at -80°C. Avoid repeated freeze-thaw cycles.
Stability:	Stable for 3 months from receipt of products under proper storage and handling conditions.
RefSeq:	<u>NP_777547</u>
RefSeq Size:	1006
RefSeq ORF:	444
Locus ID:	90410
UniProt ID:	<u>Q8IY31</u>
Cytogenetics:	17q11.2


[View online »](#)

Summary:

This gene encodes a intraflagellar transport protein important for intracellular transport. The encoded protein forms part of a complex involved in trafficking of proteins from the Golgi body, including recycling of immune signalling components (Finetti et al., PubMed: 19855387). This gene is part of a complex set of sense-antisense loci that may be co-regulated. Alternatively spliced transcript variants encoding multiple isoforms have been observed for this gene. A pseudogene of this gene is located on the long arm of chromosome 14.[provided by RefSeq, Jun 2012]

Product images:


Coomassie blue staining of purified IFT20 protein (Cat# [TP301337]). The protein was produced from HEK293T cells transfected with IFT20 cDNA clone (Cat# [RC201337]) using MegaTran 2.0 (Cat# [TT210002]).