

Product datasheet for PH301335

ISCA1 (NM_030940) Human Mass Spec Standard

Product data:

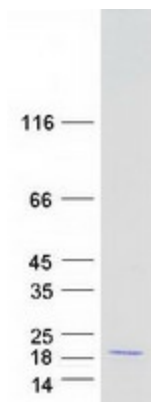
Product Type:	Mass Spec Standards
Description:	ISCA1 MS Standard C13 and N15-labeled recombinant protein (NP_112202)
Species:	Human
Expression Host:	HEK293
Expression cDNA Clone or AA Sequence:	RC201335
Predicted MW:	14.2 kDa
Protein Sequence:	>RC201335 protein sequence Red=Cloning site Green=Tags(s) MSASLVRA TVRAVSKRKLQPTRAALTLTPSAVNKIKQLLKDKPEHVGVKVGVTRTRGCNGLSYTLEYTKTK GDSDEEVIQDGVRFIEKKAQLTLLGTEM DYVEDKLSSEFVFNNPNIKGTCGCGESFNI TRTRPLEQKLISEEDLAANDILDYKDDDDKV
Tag:	C-Myc/DDK
Purity:	> 80% as determined by SDS-PAGE and Coomassie blue staining
Concentration:	>0.05 µg/µL as determined by microplate BCA method
Labeling Method:	Labeled with [U- 13C6, 15N4]-L-Arginine and [U- 13C6, 15N2]-L-Lysine
Buffer:	25 mM Tris-HCl, 100 mM glycine, pH 7.3
Storage:	Store at -80°C. Avoid repeated freeze-thaw cycles.
Stability:	Stable for 3 months from receipt of products under proper storage and handling conditions.
RefSeq:	NP_112202
RefSeq Size:	2012
RefSeq ORF:	387
Synonyms:	HBLD2; hlscA; ISA1; MMDS5
Locus ID:	81689
UniProt ID:	Q9BUE6
Cytogenetics:	9q21.33



[View online »](#)

Summary:

ISCA1 is a mitochondrial protein involved in the biogenesis and assembly of iron-sulfur clusters, which play a role in electron-transfer reactions (Cozar-Castellano et al., 2004 [PubMed 15262227]).[supplied by OMIM, Mar 2008]

Product images:

Coomassie blue staining of purified ISCA1 protein (Cat# [TP301335]). The protein was produced from HEK293T cells transfected with ISCA1 cDNA clone (Cat# [RC201335]) using MegaTran 2.0 (Cat# [TT210002]).