

Product datasheet for PH301334

PP2A-alpha (PPP2CA) (NM_002715) Human Mass Spec Standard

Product data:

Product Type:	Mass Spec Standards
Description:	PPP2CA MS Standard C13 and N15-labeled recombinant protein (NP_002706)
Species:	Human
Expression Host:	HEK293
Expression cDNA Clone or AA Sequence:	RC201334
Predicted MW:	35.6 kDa
Protein Sequence:	>RC201334 protein sequence Red=Cloning site Green=Tags(s) MDEKVFTEKELDQWIEQLNECKQLSESQVKSLCEKAKEILTKESNVQEVRCPVTVCGDVHGQFHDLMELFR IGGKSPDTNYLFMGDYVDRGYYSVETVTLVVALKVRYRERITILRGNHESRQITQVYGFYDECLRKYGNA NVWKYFTDLFDYLPLTALVDGQIFCLHGGLSPSIDTLDHIRALDRLQEVPHGPMCDLLWSDPDRGGWG ISPRGAGYTFGQDISETFNHANGLTLVSRHQVMEGYNWCHDRNVVTFISAPNYCYRCGNQAAIMELDD TLKYSFLQFDPAPRRGEPHVTRRTPDYFL TRTRPLEQKLISEEDLAANDILDYKDDDDKV
Tag:	C-Myc/DDK
Purity:	> 80% as determined by SDS-PAGE and Coomassie blue staining
Concentration:	>0.05 µg/µL as determined by microplate BCA method
Labeling Method:	Labeled with [U- ¹³ C ₆ , ¹⁵ N ₄]-L-Arginine and [U- ¹³ C ₆ , ¹⁵ N ₂]-L-Lysine
Buffer:	25 mM Tris-HCl, 100 mM glycine, pH 7.3
Storage:	Store at -80°C. Avoid repeated freeze-thaw cycles.
Stability:	Stable for 3 months from receipt of products under proper storage and handling conditions.
RefSeq:	<u>NP_002706</u>
RefSeq Size:	2643
RefSeq ORF:	927
Synonyms:	NEDLBA; PP2Ac; PP2CA; PP2Calpha; RP-C
Locus ID:	5515



[View online »](#)

UniProt ID: [P67775](#), [B3KUN1](#)

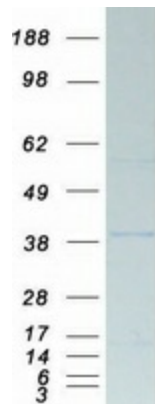
Cytogenetics: 5q31.1

Summary: This gene encodes the phosphatase 2A catalytic subunit. Protein phosphatase 2A is one of the four major Ser/Thr phosphatases, and it is implicated in the negative control of cell growth and division. It consists of a common heteromeric core enzyme, which is composed of a catalytic subunit and a constant regulatory subunit, that associates with a variety of regulatory subunits. This gene encodes an alpha isoform of the catalytic subunit. [provided by RefSeq, Jul 2008]

Protein Families: Druggable Genome, Phosphatase, Transcription Factors

Protein Pathways: Long-term depression, Oocyte meiosis, TGF-beta signaling pathway, Tight junction, Wnt signaling pathway

Product images:



Coomassie blue staining of purified PPP2CA protein (Cat# [TP301334]). The protein was produced from HEK293T cells transfected with PPP2CA cDNA clone (Cat# [RC201334]) using MegaTran 2.0 (Cat# [TT210002]).