

Product datasheet for PH301331

Kaptin (KPTN) (NM_007059) Human Mass Spec Standard

Product data:

Product Type:	Mass Spec Standards
Description:	KPTN MS Standard C13 and N15-labeled recombinant protein (NP_008990)
Species:	Human
Expression Host:	HEK293
Expression cDNA Clone or AA Sequence:	RC201331
Predicted MW:	48.1 kDa
Protein Sequence:	>RC201331 protein sequence Red=Cloning site Green=Tags(s)
	MMGEAAVAAGPCPLREDSFTRFSSQSNVYGLAGGAGRGELLAATLKGVKLVGFRYQDLRQKIRPVAKELQ FNYIPVDAEIVSIDTFNKSPPKRGLVVGITFIKDSGDKGSPFLNIYCDYEPGSEYNLDSIAQSCLNLELQ FTPFQLCHAEVQVGDQLETVFLLSGNDPAIHLKENEGLHQFEEQPVENLFPENLNTSSVWLVDVHNF GTSRRLSALGCQSGYVVRVAHVDQRSREVLQMWSVLQDGPISRVI VFSLSAAKETKDRPLQDEYSVLVASM LEPAVVYRDLLNRGLEDQLLLPGSDQFDSVLC SLVTDVDLDGRPEVLVATYGQELLCKYKRGPEGLPEA QHGFHLLWQSFSSPLLAMAHVDLTGDGLQELAVVSLKGVHILQHSLIQASELVLTRLRHQVEQRRRRLQ GLEDGAGGPAENAAS
	TRTRPLEQKLI SEEDLAANDILDYKDDDDKV
Tag:	C-Myc/DDK
Purity:	> 80% as determined by SDS-PAGE and Coomassie blue staining
Concentration:	>0.05 µg/µL as determined by microplate BCA method
Labeling Method:	Labeled with [U- 13C6, 15N4]-L-Arginine and [U- 13C6, 15N2]-L-Lysine
Buffer:	25 mM Tris-HCl, 100 mM glycine, pH 7.3
Storage:	Store at -80°C. Avoid repeated freeze-thaw cycles.
Stability:	Stable for 3 months from receipt of products under proper storage and handling conditions.
RefSeq:	<u>NP_008990</u>
RefSeq Size:	1719
RefSeq ORF:	1308
Synonyms:	2E4; KICS4; MRT41



[View online »](#)

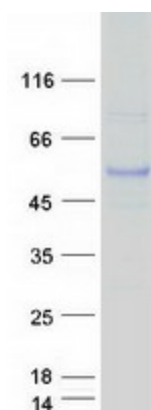
Locus ID: 11133

UniProt ID: [Q9Y664](#), [A0A384NLB4](#)

Cytogenetics: 19q13.32

Summary: This gene encodes a filamentous-actin-associated protein, which is involved in actin dynamics and plays an important role in neuromorphogenesis. This protein is part of the KICSTOR protein complex that localizes to lysosomes. Mutations in this gene result in an autosomal recessive form of intellectual disability. Alternatively spliced transcript variants have been found for this gene. [provided by RefSeq, Jul 2017]

Product images:



Coomassie blue staining of purified KPTN protein (Cat# [TP301331]). The protein was produced from HEK293T cells transfected with KPTN cDNA clone (Cat# [RC201331]) using MegaTran 2.0 (Cat# [TT210002]).