

Product datasheet for PH301330

DCP1A (NM_018403) Human Mass Spec Standard

Product data:

Product Type:	Mass Spec Standards
Description:	DCP1A MS Standard C13 and N15-labeled recombinant protein (NP_060873)
Species:	Human
Expression Host:	HEK293
Expression cDNA Clone or AA Sequence:	RC201330
Predicted MW:	63.3 kDa
Protein Sequence:	>RC201330 protein sequence Red=Cloning site Green=Tags(s)

MEALSRAGQEMSLAALKQHDPYITSIADLTGQVALYTFCKANQWEKTDIEGTLFVYRRSASPYHGFTIV
NRLNMHNLVEPVNKDLEFQLHEPFLLYRNASLSIYSIWFYDKNDCHRIAKLMADVVEEETRRSQQAARDK
QSPSQANGCSDHRPIDILEMLSRKDEYERNQMGDSNISSPGLQPSTQLSNLSTETLEEMPSGSDKSA
PSGHKHLTVEELFGTSLPKEQPAVVGLDSEEMERLPGDASQKPNFSLPFPFEQLGGAPQSETLGVPSAA
HHSVQPEITTPVLITPASITQSNEKHAPTYTIPLSPVLSPTLPAEAPTAQVPPSLPRNSTMMQAVKTTTPR
QRSPLLNQPVPELASHLIANQSPFRAPLNVNTAGTSLPSVDLLQKLRLLTPQHDQIQTPQLGKGAMVAS
FSPAAGQLATPESFIEPPSKTAAARVAASASLSNMVLAQLQSMQONQDPEVFVQPKVLSAIPVAGAPLV
TATTTAVSSVLLAPSVFQQTVTRSSDLERKASSPSPLTIGTPESQRKPSIILSKSQLQDTLIHLIKNDSS
FLSTLHEVYLQVLTKNKDNHNL

TRTRPLEQKLISEEDLAANDILDYKDDDDKV

Tag:	C-Myc/DDK
Purity:	> 80% as determined by SDS-PAGE and Coomassie blue staining
Concentration:	>0.05 µg/µL as determined by microplate BCA method
Labeling Method:	Labeled with [U- ¹³ C ₆ , ¹⁵ N ₄]-L-Arginine and [U- ¹³ C ₆ , ¹⁵ N ₂]-L-Lysine
Buffer:	25 mM Tris-HCl, 100 mM glycine, pH 7.3
Storage:	Store at -80°C. Avoid repeated freeze-thaw cycles.
Stability:	Stable for 3 months from receipt of products under proper storage and handling conditions.
RefSeq:	NP_060873
RefSeq Size:	6027
RefSeq ORF:	1746



[View online »](#)

Synonyms: HSA275986; Nbla00360; SMAD4IP1; SMIF

Locus ID: 55802

UniProt ID: [Q9NPI6](#)

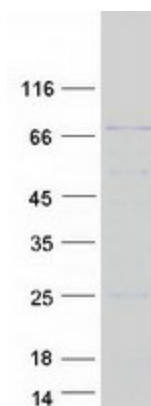
Cytogenetics: 3p21.1

Summary: Decapping is a key step in general and regulated mRNA decay. The protein encoded by this gene is a decapping enzyme. This protein and another decapping enzyme form a decapping complex, which interacts with the nonsense-mediated decay factor hUpf1 and may be recruited to mRNAs containing premature termination codons. This protein also participates in the TGF-beta signaling pathway. Alternative splicing of this gene results in multiple transcript variants. [provided by RefSeq, Feb 2014]

Protein Families: Transcription Factors

Protein Pathways: RNA degradation

Product images:



Coomassie blue staining of purified DCP1A protein (Cat# [TP301330]). The protein was produced from HEK293T cells transfected with DCP1A cDNA clone (Cat# [RC201330]) using MegaTran 2.0 (Cat# [TT210002]).