

Product datasheet for PH301328

SIX2 (NM_016932) Human Mass Spec Standard

Product data:

Product Type:	Mass Spec Standards
Description:	SIX2 MS Standard C13 and N15-labeled recombinant protein (NP_058628)
Species:	Human
Expression Host:	HEK293
Expression cDNA Clone or AA Sequence:	RC201328
Predicted MW:	32.3 kDa
Protein Sequence:	>RC201328 protein sequence Red=Cloning site Green=Tags(s) MSMLPTFGFTQEYVACVCEVLQQGGNIERLGRFLWSPACEHLHKNESVLKAKAVVAFHRGNFRELYKIL ESHQFSPHNHAKLQQLWKAHYIEAEKLRGRPLGAVGKYRVRKFP LPRSIWDGEETS YCFKEKSRSVLR EWYAHNPYSPREKRELTEATGLTTTQVSNWFKNRRQRDRAAEAKERENNENSNSNSHNPLNGSGKSVLG SSEDEKTPSGTPDHSSSSPALLLSPPPPGLPSLHSLGHPPGPSAVPVVPGGGGADPLQHHHGLQDSILN PMSANLVDLGS TRTRPLEQKLI SEEDLAANDILDYKDDDDKV
Tag:	C-Myc/DDK
Purity:	> 80% as determined by SDS-PAGE and Coomassie blue staining
Concentration:	>0.05 µg/µL as determined by microplate BCA method
Labeling Method:	Labeled with [U- ¹³ C ₆ , ¹⁵ N ₄]-L-Arginine and [U- ¹³ C ₆ , ¹⁵ N ₂]-L-Lysine
Buffer:	25 mM Tris-HCl, 100 mM glycine, pH 7.3
Storage:	Store at -80°C. Avoid repeated freeze-thaw cycles.
Stability:	Stable for 3 months from receipt of products under proper storage and handling conditions.
RefSeq:	NP_058628
RefSeq Size:	2178
RefSeq ORF:	873
Locus ID:	10736
UniProt ID:	Q9NPC8 , Q8TBA2



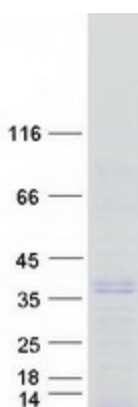
[View online »](#)

Cytogenetics: 2p21

Summary: This gene is a member of the vertebrate gene family which encode proteins homologous to the *Drosophila* 'sine oculis' homeobox protein. The encoded protein is a transcription factor which, like other members of this gene family, may be involved in limb or eye development. [provided by RefSeq, Dec 2008]

Protein Families: Transcription Factors

Product images:



Coomassie blue staining of purified SIX2 protein (Cat# [TP301328]). The protein was produced from HEK293T cells transfected with SIX2 cDNA clone (Cat# [RC201328]) using MegaTran 2.0 (Cat# [TT210002]).