

Product datasheet for PH301305

STEEP1 (NM_022101) Human Mass Spec Standard

Product data:

Product Type:	Mass Spec Standards
Description:	CXorf56 MS Standard C13 and N15-labeled recombinant protein (NP_071384)
Species:	Human
Expression Host:	HEK293
Expression cDNA Clone or AA Sequence:	RC201305
Predicted MW:	25.4 kDa
Protein Sequence:	>RC201305 representing NM_022101 Red=Cloning site Green=Tags(s) MPKVVSRSVVCSDTRDREEYDDGEKPLHVVYCLCGQMVLVLDQCLEKLPMPRDRSRVIDAAKHAHKFCN TEDEETMYLRRPEGIERQYRKKCAKGLPLFYQSQPKNAPVTFIVDGAUVKFGQGFKGTNIYTQKQEP KVMKTRTKDMGKFSSVTVSTIDEEEEIEAREVADSYAQNKVIEKQLERKGMKRRLQELAELEAKKA KMKGTLIDNQFK TRTRPLEQKLISEEDLAANDILDYKDDDDKV
Tag:	C-Myc/DDK
Purity:	> 80% as determined by SDS-PAGE and Coomassie blue staining
Concentration:	>0.05 µg/µL as determined by microplate BCA method
Labeling Method:	Labeled with [U- 13C6, 15N4]-L-Arginine and [U- 13C6, 15N2]-L-Lysine
Buffer:	25 mM Tris-HCl, 100 mM glycine, pH 7.3
Storage:	Store at -80°C. Avoid repeated freeze-thaw cycles.
Stability:	Stable for 3 months from receipt of products under proper storage and handling conditions.
RefSeq:	NP_071384
RefSeq Size:	904
RefSeq ORF:	666
Synonyms:	MRX107
Locus ID:	63932
UniProt ID:	Q9H5V9

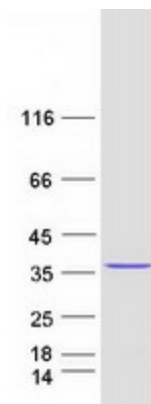


[View online »](#)

Cytogenetics: Xq24

Summary: While this gene is well-supported by transcript data, no functional information on its protein products is currently available. Three transcript variants encoding different isoforms have been found for this gene. [provided by RefSeq, Dec 2009]

Product images:



Coomassie blue staining of purified CXorf56 protein (Cat# [TP301305]). The protein was produced from HEK293T cells transfected with CXorf56 cDNA clone (Cat# [RC201305]) using MegaTran 2.0 (Cat# [TT210002]).