

Product datasheet for PH301294

TFIIF (GTF2F1) (NM_002096) Human Mass Spec Standard

Product data:

Product Type:	Mass Spec Standards
Description:	GTF2F1 MS Standard C13 and N15-labeled recombinant protein (NP_002087)
Species:	Human
Expression Host:	HEK293
Expression cDNA Clone or AA Sequence:	RC201294
Predicted MW:	58.2 kDa
Protein Sequence:	>RC201294 protein sequence Red=Cloning site Green=Tags(s)

MAALGPSSQNVTEYVVRVPKNTTKKYNIMAFNAADKVNFAATWNQARLERDLSNKKIYQEEEMPESGAGSE
FNRKLREEARRKYGIVLKEFRPEDQPWLLRVNGKSGRKFKGIKKGGVTENTSYYIFTQCPDGAFAFPV
HNWYNFTPLARHRTLTAEEAEEEWERRNKVLNHF SIMQQRRLKDQDQDEDEEEKEKRGRRKASELRIHDL
EDDLEMSSDASDASGEEGGRVPKAKKKAPLAKGGRKKKKKKGSDDDEAFEDSDDGDFEGQEVDMYSDGSSS
SQEPEESAKAPQQEEGPKGVDEQSDSSESEEEKPPPEEDKEEEEEKAPTQEKRRKDSSEESDSSEE
SDIDSEASSALFMAKKKTPPKRERKPSGGSSRGNRPGTSAEGGSTSSTLRAAASKLEQKRVSEMPAA
KRLRLDTGPQSLSGKSTPQPPSGKTTNSGDVQVTEDAVRRYL TRKPMTTKDLLKKFQTKKTGLSSEQTV
NVLAQILKRLNPERKMINDKMHFSLKE

TRTRPLEQKLI SEEDLAANDILDYKDDDDKV

Tag:	C-Myc/DDK
Purity:	> 80% as determined by SDS-PAGE and Coomassie blue staining
Concentration:	>0.05 µg/µL as determined by microplate BCA method
Labeling Method:	Labeled with [U- 13C6, 15N4]-L-Arginine and [U- 13C6, 15N2]-L-Lysine
Buffer:	25 mM Tris-HCl, 100 mM glycine, pH 7.3
Storage:	Store at -80°C. Avoid repeated freeze-thaw cycles.
Stability:	Stable for 3 months from receipt of products under proper storage and handling conditions.
RefSeq:	<u>NP_002087</u>
RefSeq Size:	2551
RefSeq ORF:	1551



[View online »](#)

Synonyms: BTF4; RAP74; TF2F1; TFIIF

Locus ID: 2962

UniProt ID: [P35269](#)

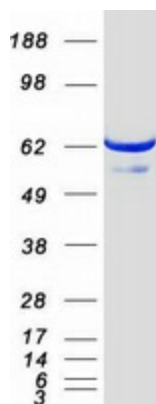
Cytogenetics: 19p13.3

Summary: TFIIF is a general transcription initiation factor that binds to RNA polymerase II and helps to recruit it to the initiation complex in collaboration with TFIIB. It promotes transcription elongation.[UniProtKB/Swiss-Prot Function]

Protein Families: Druggable Genome, Transcription Factors

Protein Pathways: Basal transcription factors

Product images:



Coomassie blue staining of purified GTF2F1 protein (Cat# [TP301294]). The protein was produced from HEK293T cells transfected with GTF2F1 cDNA clone (Cat# [RC201294]) using MegaTran 2.0 (Cat# [TT210002]).