

## Product datasheet for PH301280

### TUBB6 (NM\_032525) Human Mass Spec Standard

#### Product data:

Product Type:	Mass Spec Standards
Description:	TUBB6 MS Standard C13 and N15-labeled recombinant protein (NP_115914)
Species:	Human
Expression Host:	HEK293
Expression cDNA Clone or AA Sequence:	RC201280
Predicted MW:	49.9 kDa
Protein Sequence:	>RC201280 protein sequence Red=Cloning site Green=Tags(s)

MREIVHIQAGQCNGQIGTKFWEVISDEHGIDPAGGYVGDSALQLERINVYNESSSQKYVPRAALVDLEP  
GTMDSVRSQPFQGLFRPDNFIQGTGAGNNAKGYTEGAELVDAVLVVRKECEHCDCDCLQGFQLTHSLG  
GGTGSGMGTLLISKIREEFPDRIMNTFSVMPSPKVSQVVEPYNATLSVHQLVENTDETYCIDNEALYDI  
CFRTLKLTPTYGDLNHLVSATMSGVTTSLRFPQQLNADLRKLAVNMVFPRLHFFMPGFAPLTSRGSQQ  
YRALTVPELTQQMFDARNMMAACDPRHGRYLTVATVFRGPMMSKVEDEQMLAIQSKNSSYFVEWIPNNVK  
VAVCDIPRGLKMASTFIGNSTAIQELFKRISEQFSAMFRRKAFLHWFTGEGMDEMEFTEAESNMNDLVS  
EYQQYQDATANDGEEAFEDDEEIDG

TRTRPLEQKLISEEDLAANDILDYKDDDDKV

Tag:	C-Myc/DDK
Purity:	> 80% as determined by SDS-PAGE and Coomassie blue staining
Concentration:	>0.05 µg/µL as determined by microplate BCA method
Labeling Method:	Labeled with [U- <sup>13</sup> C <sub>6</sub> , <sup>15</sup> N <sub>4</sub> ]-L-Arginine and [U- <sup>13</sup> C <sub>6</sub> , <sup>15</sup> N <sub>2</sub> ]-L-Lysine
Buffer:	25 mM Tris-HCl, 100 mM glycine, pH 7.3
Storage:	Store at -80°C. Avoid repeated freeze-thaw cycles.
Stability:	Stable for 3 months from receipt of products under proper storage and handling conditions.
RefSeq:	<u><a href="#">NP_115914</a></u>
RefSeq Size:	1843
RefSeq ORF:	1338
Synonyms:	FPVEPD; HsT1601; TUBB-5



[View online »](#)

Locus ID: 84617

UniProt ID: [Q9BUF5](#)

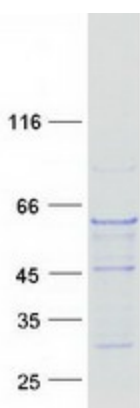
Cytogenetics: 18p11.21

Summary: Tubulin is the major constituent of microtubules. It binds two moles of GTP, one at an exchangeable site on the beta chain and one at a non-exchangeable site on the alpha chain. [UniProtKB/Swiss-Prot Function]

Protein Families: Druggable Genome

Protein Pathways: Gap junction, Pathogenic Escherichia coli infection

### Product images:



Coomassie blue staining of purified TUBB6 protein (Cat# [TP301280]). The protein was produced from HEK293T cells transfected with TUBB6 cDNA clone (Cat# [RC201280]) using MegaTran 2.0 (Cat# [TT210002]).