

Product datasheet for PH301264

SSH3BP1 (ABI1) (NM_001012752) Human Mass Spec Standard

Product data:

Product Type:	Mass Spec Standards
Description:	ABI1 MS Standard C13 and N15-labeled recombinant protein (NP_001012770)
Species:	Human
Expression Host:	HEK293
Expression cDNA Clone or AA Sequence:	RC201264
Predicted MW:	51.8 kDa
Protein Sequence:	>RC201264 protein sequence Red=Cloning site Green=Tags(s)

MAELQMLLEEEIPSGKRALIESYQNLTRVADYCENNYIQATDKRKALEETKAYTTQSLASVAYQINALAN
NVLQLLDIQASQLRRMESSINHISQTVDIHKEKVARREIGILTTNKNTSRTHKIIAPANMERPVRYIRKP
IDYTVLDDVGHGVKHGNNQPARTGTL SRTNPPTQKPPSPMSGRGTLGRNTPYKTLPEVKPPTVPNDYMT
SPARLGSQHSPGRTASLNQRPRTHSGSSGSGSRENSGSSSIGIPIAVPTSPPTIGPAAPGSAPGSQYG
TMTRQISRHNSTTSSTSSGGYRRTPSVTAQFSAQPHVNGGPLYSQNSISIAPPPPMPQLTPQIPLTGFV
ARVQENIADSPTPPPPPPDDIPMFDDSPPPPPPPVDYEDEEAADVQYNDPYADGDPAWAPKNYIEKVV
AIYDYTKDKDDELSFMEGAIYVIKKNDGWEYEGVCNRVTGLFPGNYVESIMHYTD

TRTRPLEQKLISEEDLAANDILDYKDDDDKV

Tag:	C-Myc/DDK
Purity:	> 80% as determined by SDS-PAGE and Coomassie blue staining
Concentration:	>0.05 µg/µL as determined by microplate BCA method
Labeling Method:	Labeled with [U- 13C6, 15N4]-L-Arginine and [U- 13C6, 15N2]-L-Lysine
Buffer:	25 mM Tris-HCl, 100 mM glycine, pH 7.3
Storage:	Store at -80°C. Avoid repeated freeze-thaw cycles.
Stability:	Stable for 3 months from receipt of products under proper storage and handling conditions.
RefSeq:	<u>NP_001012770</u>
RefSeq Size:	3629
RefSeq ORF:	1428
Synonyms:	ABI-1; ABLBP4; E3B1; NAP1BP; SSH3BP; SSH3BP1

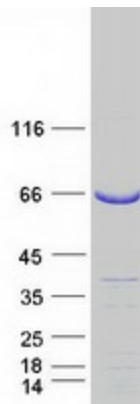


[View online »](#)

Locus ID: 10006
UniProt ID: [Q8IZP0](#)
Cytogenetics: 10p12.1
Summary:

This gene encodes a member of the Abelson-interactor family of adaptor proteins. These proteins facilitate signal transduction as components of several multiprotein complexes, and regulate actin polymerization and cytoskeletal remodeling through interactions with Abelson tyrosine kinases. The encoded protein plays a role in macropinocytosis as a component of the WAVE2 complex, and also forms a complex with EPS8 and SOS1 that mediates signal transduction from Ras to Rac. This gene may play a role in the progression of several malignancies including melanoma, colon cancer and breast cancer, and a t(10;11) chromosomal translocation involving this gene and the MLL gene has been associated with acute myeloid leukemia. Alternatively spliced transcript variants encoding multiple isoforms have been observed for this gene, and a pseudogene of this gene is located on the long arm of chromosome 14. [provided by RefSeq, Sep 2011]

Product images:



Coomassie blue staining of purified ABI1 protein (Cat# [TP301264]). The protein was produced from HEK293T cells transfected with ABI1 cDNA clone (Cat# [RC201264]) using MegaTran 2.0 (Cat# [TT210002]).