

## Product datasheet for PH301254

### p23 (PTGES3) (NM\_006601) Human Mass Spec Standard

#### Product data:

Product Type:	Mass Spec Standards
Description:	PTGES3 MS Standard C13 and N15-labeled recombinant protein (NP_006592)
Species:	Human
Expression Host:	HEK293
Expression cDNA Clone or AA Sequence:	RC201254
Predicted MW:	18.7 kDa
Protein Sequence:	>RC201254 protein sequence Red=Cloning site Green=Tags(s)  MQPASAKWYDRRDYVFIIEFCVEDSKDVNVNFEKSKLTFSCLGSDNFKHLNEIDL FHCIDPNSKHKRTD RSILCCLRKGESGQSWPRLTKERAKLNWLSVDFNNWKDWEDDSDEDMSNFD RFSEMMNMGDEDVDLPE VDGADDDSQDSDDEKMPDLE  TRTRPLEQKLI SEEDLAANDILDYKDDDDKV
Tag:	C-Myc/DDK
Purity:	> 80% as determined by SDS-PAGE and Coomassie blue staining
Concentration:	>0.05 µg/µL as determined by microplate BCA method
Labeling Method:	Labeled with [U- 13C6, 15N4]-L-Arginine and [U- 13C6, 15N2]-L-Lysine
Buffer:	25 mM Tris-HCl, 100 mM glycine, pH 7.3
Storage:	Store at -80°C. Avoid repeated freeze-thaw cycles.
Stability:	Stable for 3 months from receipt of products under proper storage and handling conditions.
RefSeq:	<a href="#">NP_006592</a>
RefSeq Size:	2045
RefSeq ORF:	480
Synonyms:	cPGES; P23; TEBP
Locus ID:	10728
UniProt ID:	<a href="#">Q15185</a> , <a href="#">A0A024RB32</a>



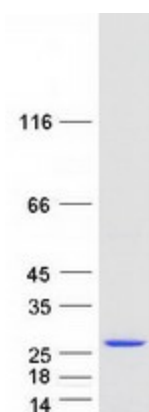
[View online »](#)

Cytogenetics: 12

**Summary:** This gene encodes an enzyme that converts prostaglandin endoperoxide H2 (PGH2) to prostaglandin E2 (PGE2). This protein functions as a co-chaperone with heat shock protein 90 (HSP90), localizing to response elements in DNA and disrupting transcriptional activation complexes. Alternative splicing results in multiple transcript variants. There are multiple pseudogenes of this gene on several different chromosomes. [provided by RefSeq, Feb 2016]

**Protein Families:** Druggable Genome, Nuclear Hormone Receptor

### Product images:



Coomassie blue staining of purified PTGES3 protein (Cat# [TP301254]). The protein was produced from HEK293T cells transfected with PTGES3 cDNA clone (Cat# [RC201254]) using MegaTran 2.0 (Cat# [TT210002]).