

## Product datasheet for PH301240

### ARF1 (NM\_001024227) Human Mass Spec Standard

#### Product data:

Product Type:	Mass Spec Standards
Description:	ARF1 MS Standard C13 and N15-labeled recombinant protein (NP_001019398)
Species:	Human
Expression Host:	HEK293
Expression cDNA Clone or AA Sequence:	RC201240
Predicted MW:	20.7 kDa
Protein Sequence:	>RC201240 protein sequence Red=Cloning site Green=Tags(s)  MGNIFANLFGKLFGKKEMRILMVGLDAAGKTTILYKLLKGEIVTTIPTIGFNVETVEYKNISFTVWDVGG QDKIRPLWRHYFQNTQGLIFVVDSDNRERVNEAREELMRMLAEDELRDVLLVLFANKQDLPNAMNAEIT DKLGLHSLRHRNWYIQATCATSGDGLYEGLDWLSNQLRNQK  TRTRPLEQKLISEEDLAANDILDYKDDDDKV
Tag:	C-Myc/DDK
Purity:	> 80% as determined by SDS-PAGE and Coomassie blue staining
Concentration:	>0.05 µg/µL as determined by microplate BCA method
Labeling Method:	Labeled with [U- 13C6, 15N4]-L-Arginine and [U- 13C6, 15N2]-L-Lysine
Buffer:	25 mM Tris-HCl, 100 mM glycine, pH 7.3
Storage:	Store at -80°C. Avoid repeated freeze-thaw cycles.
Stability:	Stable for 3 months from receipt of products under proper storage and handling conditions.
RefSeq:	<a href="#">NP_001019398</a>
RefSeq Size:	2020
RefSeq ORF:	543
Synonyms:	PVNH8
Locus ID:	375
UniProt ID:	<a href="#">P84077</a> , <a href="#">A0A024R3Q0</a>



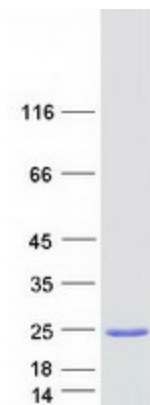
[View online »](#)

**Cytogenetics:** 1q42.13

**Summary:** ADP-ribosylation factor 1 (ARF1) is a member of the human ARF gene family. The family members encode small guanine nucleotide-binding proteins that stimulate the ADP-ribosyltransferase activity of cholera toxin and play a role in vesicular trafficking as activators of phospholipase D. The gene products, including 6 ARF proteins and 11 ARF-like proteins, constitute a family of the RAS superfamily. The ARF proteins are categorized as class I (ARF1, ARF2 and ARF3), class II (ARF4 and ARF5) and class III (ARF6), and members of each class share a common gene organization. The ARF1 protein is localized to the Golgi apparatus and has a central role in intra-Golgi transport. Multiple alternatively spliced transcript variants encoding the same protein have been found for this gene. [provided by RefSeq, Jul 2008]

**Protein Pathways:** Vibrio cholerae infection

### Product images:



Coomassie blue staining of purified ARF1 protein (Cat# [TP301240]). The protein was produced from HEK293T cells transfected with ARF1 cDNA clone (Cat# [RC201240]) using MegaTran 2.0 (Cat# [TT210002]).