

## Product datasheet for PH301233

### NCF1 (NM\_000265) Human Mass Spec Standard

#### Product data:

Product Type:	Mass Spec Standards
Description:	NCF1 MS Standard C13 and N15-labeled recombinant protein (NP_000256)
Species:	Human
Expression Host:	HEK293
Expression cDNA Clone or AA Sequence:	RC201233
Predicted MW:	44.5 kDa
Protein Sequence:	>RC201233 representing NM_000265 Red=Cloning site Green=Tags(s)
	MGDTFIRHIALLGFEKRFVPSQHYVYMFVVKWQDLSEKVVYRRFTEIYEFHKTLEKEMFPIEAGAINPENR IIPHLPAKWFQDQRAAENRQGLTEYCSLMSLPTKISRCPHLLDFFKVRPDDLKLPDNTQTKPETYL MPKDGKSTATDITGPIILQTYRAIANYEKTSSEMALSTGDVVEVVEKSESGWWFCQMKAKRGWIPASFL EPLDSPDETEDPEPNYAGEPYVAIKAYTAVEGDEVSLLEGEAVEVIHKLLDGWWVIRKDDVTGYFPMSYL QKSGQDVSQAQRQIKRGAPRRSSIRNAHSIHQRSRKRLSQDAYRRNSVRFLQQRQRARPGPQSPGSP EEERQTQRSKPQPAVPPRPSADLILNRCSESTRKRLASPV
	TRTRPLEQKLI SEEDLAANDILDYKDDDDKV
Tag:	C-Myc/DDK
Purity:	> 80% as determined by SDS-PAGE and Coomassie blue staining
Concentration:	>0.05 µg/µL as determined by microplate BCA method
Labeling Method:	Labeled with [U- <sup>13</sup> C <sub>6</sub> , <sup>15</sup> N <sub>4</sub> ]-L-Arginine and [U- <sup>13</sup> C <sub>6</sub> , <sup>15</sup> N <sub>2</sub> ]-L-Lysine
Buffer:	25 mM Tris-HCl, 100 mM glycine, pH 7.3
Storage:	Store at -80°C. Avoid repeated freeze-thaw cycles.
Stability:	Stable for 3 months from receipt of products under proper storage and handling conditions.
RefSeq:	<u>NP_000256</u>
RefSeq Size:	1409
RefSeq ORF:	1170
Synonyms:	CGD1; NCF1A; NOXO2; p47phox; SH3PXD1A
Locus ID:	653361



[View online »](#)

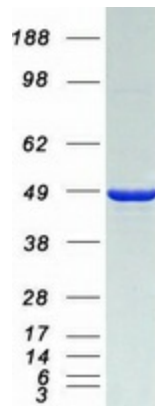
UniProt ID: [P14598](#)

Cytogenetics: 7q11.23

Summary: The protein encoded by this gene is a 47 kDa cytosolic subunit of neutrophil NADPH oxidase. This oxidase is a multicomponent enzyme that is activated to produce superoxide anion. Mutations in this gene have been associated with chronic granulomatous disease. [provided by RefSeq, Jul 2008]

Protein Pathways: Chemokine signaling pathway, Fc gamma R-mediated phagocytosis, Leukocyte transendothelial migration, Pathogenic Escherichia coli infection, Regulation of actin cytoskeleton

### Product images:



Coomassie blue staining of purified NCF1 protein (Cat# [TP301233]). The protein was produced from HEK293T cells transfected with NCF1 cDNA clone (Cat# [RC201233]) using MegaTran 2.0 (Cat# [TT210002]).