

## Product datasheet for PH301223

### HIGD2A (NM\_138820) Human Mass Spec Standard

#### Product data:

Product Type:	Mass Spec Standards
Description:	HIGD2A MS Standard C13 and N15-labeled recombinant protein (NP_620175)
Species:	Human
Expression Host:	HEK293
Expression cDNA Clone or AA Sequence:	RC201223
Predicted MW:	11.5 kDa
Protein Sequence:	>RC201223 protein sequence <b>Red</b> =Cloning site <b>Green</b> =Tags(s)  MATPGPVIPEVPFEPSPKPPVIEGLSPTVYRNPESEFKEKFRKTRNPVPIGCLATAAALTYGLYSFHRG NSQRSQLMMRTRIAAQGFTVAAILLGLAVTAMKSRP  <b>TR</b> TRPLEQKLISEEDLAANDILDYKDDDDKV
Tag:	C-Myc/DDK
Purity:	> 80% as determined by SDS-PAGE and Coomassie blue staining
Concentration:	>0.05 µg/µL as determined by microplate BCA method
Labeling Method:	Labeled with [U- 13C6, 15N4]-L-Arginine and [U- 13C6, 15N2]-L-Lysine
Buffer:	25 mM Tris-HCl, 100 mM glycine, pH 7.3
Storage:	Store at -80°C. Avoid repeated freeze-thaw cycles.
Stability:	Stable for 3 months from receipt of products under proper storage and handling conditions.
RefSeq:	<a href="#">NP_620175</a>
RefSeq Size:	628
RefSeq ORF:	318
Synonyms:	RCF1b
Locus ID:	192286
UniProt ID:	<a href="#">Q9BW72</a> , <a href="#">A0A024R7Q3</a>
Cytogenetics:	5q35.2



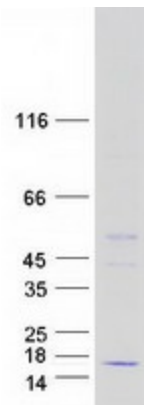
[View online »](#)

**Summary:**

The protein encoded by this gene is a subunit of the cytochrome c oxidase complex (complex IV), which is the terminal enzyme in the mitochondrial respiratory chain. The encoded protein is an inner mitochondrial membrane protein and is a functional ortholog of the yeast respiratory supercomplex factor 1 (Rcf1). In mouse, the orthologous protein enhances cell survival under conditions of hypoxia. [provided by RefSeq, Sep 2016]

**Protein Families:**

Transmembrane

**Product images:**

Coomassie blue staining of purified HIGD2A protein (Cat# [TP301223]). The protein was produced from HEK293T cells transfected with HIGD2A cDNA clone (Cat# [RC201223]) using MegaTran 2.0 (Cat# [TT210002]).