

Product datasheet for PH301222

PLAUR (NM_002659) Human Mass Spec Standard

Product data:

Product Type:	Mass Spec Standards
Description:	PLAUR MS Standard C13 and N15-labeled recombinant protein (NP_002650)
Species:	Human
Expression Host:	HEK293
Expression cDNA Clone or AA Sequence:	RC201222
Predicted MW:	37 kDa
Protein Sequence:	>RC201222 protein sequence Red=Cloning site Green=Tags(s)

MGHPPLLPLLLLHTCVPASWGLRCMQCKTNGDCRVEECALGQDLCRTTIVRLWEEGEELELVEKSCSTHS
EKTNRTLSYRTGLKITSLETVVCGLDLCNQNGSRAVTYSRSRYLECI SCGSSDMS CERGRHQSLQCRSP
EEQCLDVVTHWIQEGEGRPKDDRHLRGCYLPGCPGNGFHNNDTFHFLKCCNTTKCNEGP ILELENLP
QNGRQCYSCKGNSTHGCSSEETFLIDCRGPMNQCLVATGTHEPKNQSYMVRGCATASMCQH AHLGD AFSM
NHIDVSCCTKSGCNHPDL DVQYRSGAAPQPGAHL SLTITLLMTARLWGGTLLWT

TRTRPLEQKLI SEEDLAANDILDYKDDDDKV

Tag:	C-Myc/DDK
Purity:	> 80% as determined by SDS-PAGE and Coomassie blue staining
Concentration:	>0.05 µg/µL as determined by microplate BCA method
Labeling Method:	Labeled with [U- ¹³ C ₆ , ¹⁵ N ₄]-L-Arginine and [U- ¹³ C ₆ , ¹⁵ N ₂]-L-Lysine
Buffer:	25 mM Tris-HCl, 100 mM glycine, pH 7.3
Storage:	Store at -80°C. Avoid repeated freeze-thaw cycles.
Stability:	Stable for 3 months from receipt of products under proper storage and handling conditions.
RefSeq:	<u>NP_002650</u>
RefSeq Size:	1570
RefSeq ORF:	1005
Synonyms:	CD87; U-PAR; UPAR; URKR
Locus ID:	5329



[View online »](#)

UniProt ID: [Q03405](#)

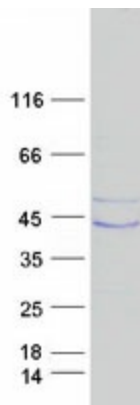
Cytogenetics: 19q13.31

Summary: This gene encodes the receptor for urokinase plasminogen activator and, given its role in localizing and promoting plasmin formation, likely influences many normal and pathological processes related to cell-surface plasminogen activation and localized degradation of the extracellular matrix. It binds both the proprotein and mature forms of urokinase plasminogen activator and permits the activation of the receptor-bound pro-enzyme by plasmin. The protein lacks transmembrane or cytoplasmic domains and may be anchored to the plasma membrane by a glycosyl-phosphatidylinositol (GPI) moiety following cleavage of the nascent polypeptide near its carboxy-terminus. However, a soluble protein is also produced in some cell types. Alternative splicing results in multiple transcript variants encoding different isoforms. The proprotein experiences several post-translational cleavage reactions that have not yet been fully defined. [provided by RefSeq, Jul 2008]

Protein Families: Druggable Genome, Secreted Protein

Protein Pathways: Complement and coagulation cascades

Product images:



Coomassie blue staining of purified PLAUR protein (Cat# [TP301222]). The protein was produced from HEK293T cells transfected with PLAUR cDNA clone (Cat# [RC201222]) using MegaTran 2.0 (Cat# [TT210002]).