

Product datasheet for PH301210

TRIB2 (NM_021643) Human Mass Spec Standard

Product data:

| | |
|---------------------------------------|---|
| Product Type: | Mass Spec Standards |
| Description: | TRIB2 MS Standard C13 and N15-labeled recombinant protein (NP_067675) |
| Species: | Human |
| Expression Host: | HEK293 |
| Expression cDNA Clone or AA Sequence: | RC201210 |
| Predicted MW: | 38.8 kDa |
| Protein Sequence: | >RC201210 protein sequence Red=Cloning site Green=Tags(s) |

MNIHRSTPITIARYGRSRNKTQDFEELSSIRSAEPSQSFSPNLGSPSPPETPNLSHCVSCIGKYLLLEPL
EGDHVFRVHLHSGEELVCKVFDISCYQESLAPCFCLSAHSNINQITEIILGETKAYVFFERSYGMHSF
VRTCKKLREEEAARLFYQIASAVAHCHDGGVLRLDLKLRKFIKDEERTRVKLESLEDAYILRGDDSL
DKHGCPAYVSPEILNTSGSYSGKAADVWSLGVMLYTMLVGRYPFHDIEPSSLFSKIRRGQFNIPETLSPK
AKCLIRSILRREPSERLTSQEILDHPWFSTDFSVSNSAYGAKEVSDQLVPDVNMEENLDPFFN

TRTRPLEQKLISEEDLAANDILDYKDDDDKV

| | |
|------------------|--|
| Tag: | C-Myc/DDK |
| Purity: | > 80% as determined by SDS-PAGE and Coomassie blue staining |
| Concentration: | >0.05 µg/µL as determined by microplate BCA method |
| Labeling Method: | Labeled with [U- ¹³ C ₆ , ¹⁵ N ₄]-L-Arginine and [U- ¹³ C ₆ , ¹⁵ N ₂]-L-Lysine |
| Buffer: | 25 mM Tris-HCl, 100 mM glycine, pH 7.3 |
| Storage: | Store at -80°C. Avoid repeated freeze-thaw cycles. |
| Stability: | Stable for 3 months from receipt of products under proper storage and handling conditions. |
| RefSeq: | <u>NP_067675</u> |
| RefSeq Size: | 4408 |
| RefSeq ORF: | 1029 |
| Synonyms: | C5FW; GS3955; TRB2 |
| Locus ID: | 28951 |



[View online »](#)

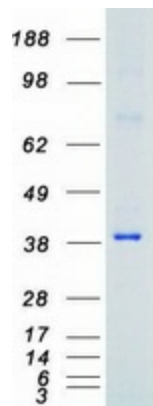
UniProt ID: [Q92519](#)

Cytogenetics: 2p24.3

Summary: This gene encodes one of three members of the Tribbles family. The Tribbles members share a Trb domain, which is homologous to protein serine-threonine kinases, but lacks the active site lysine and probably lacks a catalytic function. The Tribbles proteins interact and modulate the activity of signal transduction pathways in a number of physiological and pathological processes. This Tribbles member induces apoptosis of cells mainly of the hematopoietic origin. It has been identified as a protein up-regulated by inflammatory stimuli in myeloid (THP-1) cells, and also as an oncogene that inactivates the transcription factor C/EBPalpha (CCAAT/enhancer-binding protein alpha) and causes acute myelogenous leukemia. Alternatively spliced transcript variants have been found for this gene. [provided by RefSeq, Mar 2009]

Protein Families: Druggable Genome, Protein Kinase

Product images:



Coomassie blue staining of purified TRIB2 protein (Cat# [TP301210]). The protein was produced from HEK293T cells transfected with TRIB2 cDNA clone (Cat# [RC201210]) using MegaTran 2.0 (Cat# [TT210002]).