

Product datasheet for PH301206

Sigma1 receptor (SIGMAR1) (NM_005866) Human Mass Spec Standard

Product data:

Product Type:	Mass Spec Standards
Description:	SIGMAR1 MS Standard C13 and N15-labeled recombinant protein (NP_005857)
Species:	Human
Expression Host:	HEK293
Expression cDNA Clone or AA Sequence:	RC201206
Predicted MW:	25.1 kDa
Protein Sequence:	>RC201206 protein sequence Red =Cloning site Green =Tags(s) MQWAVGRRWAWAALLLAVAAVLTQVVWLWLGTSFVFQREEIAQLARQYAGLDHELAFSRLIVELRRLHP GHVLPDEELQWVFNAGGWMGAMCLLHASLSEYVLLFGTALGSRGHSGRYWAEISDTIISGTFHQWREGT TKSEVFYPGETVVHGPGEATAVEWGPNTWMVEYGRGVIPSTLAFALADTVFSTQDFLTLFYTLRSYARGL RLELTTYLFGQDP TRTRPLEQKLI SEEDLAANDILDYKDDDDKV
Tag:	C-Myc/DDK
Purity:	> 80% as determined by SDS-PAGE and Coomassie blue staining
Concentration:	>0.05 µg/µL as determined by microplate BCA method
Labeling Method:	Labeled with [U- ¹³ C ₆ , ¹⁵ N ₄]-L-Arginine and [U- ¹³ C ₆ , ¹⁵ N ₂]-L-Lysine
Buffer:	25 mM Tris-HCl, 100 mM glycine, pH 7.3
Storage:	Store at -80°C. Avoid repeated freeze-thaw cycles.
Stability:	Stable for 3 months from receipt of products under proper storage and handling conditions.
RefSeq:	NP_005857
RefSeq Size:	1728
RefSeq ORF:	669
Synonyms:	ALS16; DSMA2; hSigmaR1; OPRS1; SIG-1R; sigma1R; SR-BP; SR-BP1; SRBP
Locus ID:	10280
UniProt ID:	Q99720



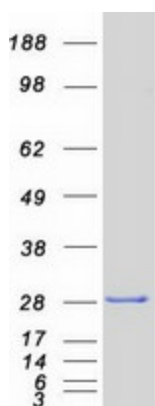
[View online »](#)

Cytogenetics: 9p13.3

Summary: This gene encodes a receptor protein that interacts with a variety of psychotomimetic drugs, including cocaine and amphetamines. The receptor is believed to play an important role in the cellular functions of various tissues associated with the endocrine, immune, and nervous systems. As indicated by its previous name, opioid receptor sigma 1 (OPRS1), the product of this gene was erroneously thought to function as an opioid receptor; it is now thought to be a non-opioid receptor. Mutations in this gene has been associated with juvenile amyotrophic lateral sclerosis 16. Alternative splicing of this gene results in transcript variants encoding distinct isoforms. [provided by RefSeq, Aug 2013]

Protein Families: Druggable Genome, GPCR, Transmembrane

Product images:



Coomassie blue staining of purified SIGMAR1 protein (Cat# [TP301206]). The protein was produced from HEK293T cells transfected with SIGMAR1 cDNA clone (Cat# [RC201206]) using MegaTran 2.0 (Cat# [TT210002]).