

## Product datasheet for PH301203

### S100 alpha 2 (S100A2) (NM\_005978) Human Mass Spec Standard

#### Product data:

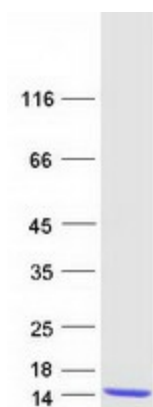
Product Type:	Mass Spec Standards
Description:	S100A2 MS Standard C13 and N15-labeled recombinant protein (NP_005969)
Species:	Human
Expression Host:	HEK293
Expression cDNA Clone or AA Sequence:	RC201203
Predicted MW:	11.1 kDa
Protein Sequence:	>RC201203 protein sequence <b>Red</b> =Cloning site <b>Green</b> =Tags(s)  MMCSSLEQALAVLVTTTFHKYSCQEGDKFKLSKGEMKELLHKELPSFVGEKVDEEGLKKLMGSLDENSQQ VDFQEYAVFLALITVMCNDFQGPCDRP  <b>TRTRPLEQKLISEEDLAANDILDYKDDDDKV</b>
Tag:	C-Myc/DDK
Purity:	> 80% as determined by SDS-PAGE and Coomassie blue staining
Concentration:	>0.05 µg/µL as determined by microplate BCA method
Labeling Method:	Labeled with [U- 13C6, 15N4]-L-Arginine and [U- 13C6, 15N2]-L-Lysine
Buffer:	25 mM Tris-HCl, 100 mM glycine, pH 7.3
Storage:	Store at -80°C. Avoid repeated freeze-thaw cycles.
Stability:	Stable for 3 months from receipt of products under proper storage and handling conditions.
RefSeq:	<a href="#">NP_005969</a>
RefSeq Size:	970
RefSeq ORF:	297
Synonyms:	CAN19; S100L
Locus ID:	6273
UniProt ID:	<a href="#">P29034</a> , <a href="#">A0A590UJ49</a>
Cytogenetics:	1q21.3



[View online »](#)

**Summary:**

The protein encoded by this gene is a member of the S100 family of proteins containing 2 EF-hand calcium-binding motifs. S100 proteins are localized in the cytoplasm and/or nucleus of a wide range of cells, and involved in the regulation of a number of cellular processes such as cell cycle progression and differentiation. S100 genes include at least 13 members which are located as a cluster on chromosome 1q21. This protein may have a tumor suppressor function. Chromosomal rearrangements and altered expression of this gene have been implicated in breast cancer. [provided by RefSeq, Jul 2008]

**Product images:**

Coomassie blue staining of purified S100A2 protein (Cat# [TP301203]). The protein was produced from HEK293T cells transfected with S100A2 cDNA clone (Cat# [RC201203]) using MegaTran 2.0 (Cat# [TT210002]).