

Product datasheet for PH301201

PSMD11 (NM_002815) Human Mass Spec Standard

Product data:

Product Type:	Mass Spec Standards
Description:	PSMD11 MS Standard C13 and N15-labeled recombinant protein (NP_002806)
Species:	Human
Expression Host:	HEK293
Expression cDNA Clone or AA Sequence:	RC201201
Predicted MW:	47.3 kDa
Protein Sequence:	>RC201201 representing NM_002815 Red=Cloning site Green=Tags(s)

MAAAVVEFQRAQSLSTDREASIDILHSIVKRDIQENDEEAVQVKEQSILELGSLLAKTGQAAELGGLL
KYVRPFLNSISKAKAARLVRSLLDLFLDMEAATGQEVLECLECIEWAKSEKRTFLRQALEARLVSLYFDT
KRYQEALHLGSQLLRELKMKDDKALLVEVQLLESKTYHALSNLPKARAALTSARTTANAICYPPKLQATL
DMQSGIIHAAEEKDWKTAYSFYEAFFEGYDSIDSPKAITSLKYMLLCKIMLNPEDVQALVSGKLALRYA
GRQTEALKCVAQASKNRSLADFEKALTDYRAELRDDPIISTHLAKLYDNLLEQNLIRVIEPFSRVQIEHI
SSLIKLSKADVERKLSQMILDKKFGILDQEGVLIIFDEPPVDKTYEAALETIQNMSKVVDSL YNKAKK
LT

TRTRPLEQKLI SEEDLAANDILDYKDDDDKV

Tag:	C-Myc/DDK
Purity:	> 80% as determined by SDS-PAGE and Coomassie blue staining
Concentration:	>0.05 µg/µL as determined by microplate BCA method
Labeling Method:	Labeled with [U- ¹³ C ₆ , ¹⁵ N ₄]-L-Arginine and [U- ¹³ C ₆ , ¹⁵ N ₂]-L-Lysine
Buffer:	25 mM Tris-HCl, 100 mM glycine, pH 7.3
Storage:	Store at -80°C. Avoid repeated freeze-thaw cycles.
Stability:	Stable for 3 months from receipt of products under proper storage and handling conditions.
RefSeq:	NP_002806
RefSeq Size:	1598
RefSeq ORF:	1266
Synonyms:	p44.5; Rpn6; S9



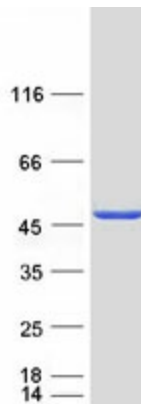
[View online »](#)

Locus ID: 5717
UniProt ID: [O00231](#)
Cytogenetics: 17q11.2

Summary: The 26S proteasome is a multicatalytic proteinase complex with a highly ordered structure composed of 2 complexes, a 20S core and a 19S regulator. The 20S core is composed of 4 rings of 28 non-identical subunits; 2 rings are composed of 7 alpha subunits and 2 rings are composed of 7 beta subunits. The 19S regulator is composed of a base, which contains 6 ATPase subunits and 2 non-ATPase subunits, and a lid, which contains up to 10 non-ATPase subunits. Proteasomes are distributed throughout eukaryotic cells at a high concentration and cleave peptides in an ATP/ubiquitin-dependent process in a non-lysosomal pathway. This gene encodes a member of the proteasome subunit S9 family that functions as a non-ATPase subunit of the 19S regulator and is phosphorylated by AMP-activated protein kinase. Alternatively spliced transcript variants have been observed for this gene. [provided by RefSeq, Jul 2012]

Protein Families: Stem cell - Pluripotency
Protein Pathways: Proteasome

Product images:



Coomassie blue staining of purified PSMD11 protein (Cat# [TP301201]). The protein was produced from HEK293T cells transfected with PSMD11 cDNA clone (Cat# [RC201201]) using MegaTran 2.0 (Cat# [TT210002]).