

Product datasheet for PH301183

BTN3A2 (NM_007047) Human Mass Spec Standard

Product data:

Product Type:	Mass Spec Standards
Description:	BTN3A2 MS Standard C13 and N15-labeled recombinant protein (NP_008978)
Species:	Human
Expression Host:	HEK293
Expression cDNA Clone or AA Sequence:	RC201183
Predicted MW:	36.4 kDa
Protein Sequence:	>RC201183 protein sequence Red=Cloning site Green=Tags(s)

MKMASSLAFLLLNHFVSLLLVQLLTPCSAQF SVLGPSPGILAMVGEDADLPCHLFPTMSAETMELKWVSS
SLRQVVVNYADGKEVEDRQSAPYRGRTSILRDGITAGKAALRIHNVTASDSGKYL CYFQDGFYEKALVE
LKVAALGSNLHVEVKGYEDGGIHL ECRSTGWYPQPQIQWSNAKGENIPAVEAPVVADGVGLYEVAASVIM
RGGSGEGVSCIIRNSLLGLEKTASISADPFFRSAQPWIAALAGTLPILL LLLLAGASYFLWRQKKEITAL
SSEIESEQEMKEMGYAATEREISLRESLQEELKRKKIQYLTRGEESSSDTNKSA

TRTRPLEQKLISEEDLAANDILDYKDDDDKV

Tag:	C-Myc/DDK
Purity:	> 80% as determined by SDS-PAGE and Coomassie blue staining
Concentration:	>0.05 µg/µL as determined by microplate BCA method
Labeling Method:	Labeled with [U- ¹³ C ₆ , ¹⁵ N ₄]-L-Arginine and [U- ¹³ C ₆ , ¹⁵ N ₂]-L-Lysine
Buffer:	25 mM Tris-HCl, 100 mM glycine, pH 7.3
Storage:	Store at -80°C. Avoid repeated freeze-thaw cycles.
Stability:	Stable for 3 months from receipt of products under proper storage and handling conditions.
RefSeq:	<u>NP_008978</u>
RefSeq Size:	3776
RefSeq ORF:	1005
Synonyms:	BT3.2; BTF4; BTN3.2; CD277
Locus ID:	11118



[View online »](#)

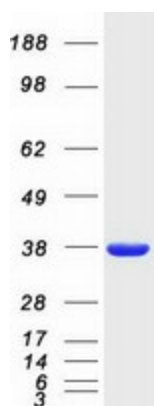
UniProt ID: [P78410](#), [A8K4B5](#)

Cytogenetics: 6p22.2

Summary: This gene encodes a member of the immunoglobulin superfamily, which resides in the juxta-telomeric region of the major histocompatibility class 1 locus and is clustered with the other family members on chromosome 6. The encoded protein may be involved in the adaptive immune response. Alternatively spliced transcript variants encoding different isoforms have been found for this gene. [provided by RefSeq, Jun 2013]

Protein Families: Druggable Genome, Transmembrane

Product images:



Coomassie blue staining of purified BTN3A2 protein (Cat# [TP301183]). The protein was produced from HEK293T cells transfected with BTN3A2 cDNA clone (Cat# [RC201183]) using MegaTran 2.0 (Cat# [TT210002]).