

Product datasheet for PH301175

GIPC (GIPC1) (NM_202470) Human Mass Spec Standard

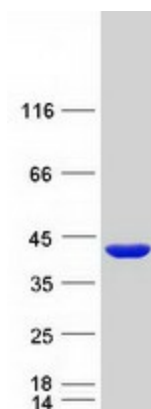
Product data:

| | |
|---------------------------------------|---|
| Product Type: | Mass Spec Standards |
| Description: | GIPC1 MS Standard C13 and N15-labeled recombinant protein (NP_974199) |
| Species: | Human |
| Expression Host: | HEK293 |
| Expression cDNA Clone or AA Sequence: | RC201175 |
| Predicted MW: | 36 kDa |
| Protein Sequence: | >RC201175 protein sequence Red=Cloning site Green=Tags(s) MPLGLGRRKKAPPLVENEAEAPGRGGLGVGEPGLGGGSGGPQMGLPPPPPALRPRLVFHTQLAHGSPT GRIEGFTNVKELYGKIAEAFRLPTAEVMFCTLNTHKVDMDKLLGGQIGLEDFIFAHVKGQRKEVEVKSE DALGLTITDNGAGYAFIKRIKEGSVIDHIHLISVGMIEAINGQSLGCRHYEVARLLKELPRGRTFTLK LTEPRKAFDMISQRSAGGRPGSGPQLGTGRGTLRLRSRGPATVEDLPSAFEKAIEKVDDLLESYMGIRD TELAATMVELGKDKRNPDELAELDERLGDFAFPDEFVFDVWGAIGDAKVGRY TRTRPLEQKLISEEDLAANDILDYKDDDDKV |
| Tag: | C-Myc/DDK |
| Purity: | > 80% as determined by SDS-PAGE and Coomassie blue staining |
| Concentration: | >0.05 µg/µL as determined by microplate BCA method |
| Labeling Method: | Labeled with [U- ¹³ C ₆ , ¹⁵ N ₄]-L-Arginine and [U- ¹³ C ₆ , ¹⁵ N ₂]-L-Lysine |
| Buffer: | 25 mM Tris-HCl, 100 mM glycine, pH 7.3 |
| Storage: | Store at -80°C. Avoid repeated freeze-thaw cycles. |
| Stability: | Stable for 3 months from receipt of products under proper storage and handling conditions. |
| RefSeq: | NP_974199 |
| RefSeq Size: | 1820 |
| RefSeq ORF: | 999 |
| Synonyms: | C19orf3; GIPC; GLUT1CBP; Hs.6454; IIP-1; NIP; OPDM2; RGS19IP1; SEMCAP; SYNECTIIN; SYNECTIN; TIP-2 |



[View online »](#)

| | |
|-------------------|--|
| Locus ID: | 10755 |
| UniProt ID: | O14908 , A0A024R7I0 |
| Cytogenetics: | 19p13.12 |
| Summary: | GIPC1 is a scaffolding protein that regulates cell surface receptor expression and trafficking (Lee et al., 2008 [PubMed 18775991]).[supplied by OMIM, Apr 2009] |
| Protein Families: | Druggable Genome |

Product images:

Coomassie blue staining of purified GIPC1 protein (Cat# [TP301175]). The protein was produced from HEK293T cells transfected with GIPC1 cDNA clone (Cat# [RC201175]) using MegaTran 2.0 (Cat# [TT210002]).