

Product datasheet for PH301172

VTI1B (NM_006370) Human Mass Spec Standard

Product data:

Product Type:	Mass Spec Standards
Description:	VTI1B MS Standard C13 and N15-labeled recombinant protein (NP_006361)
Species:	Human
Expression Host:	HEK293
Expression cDNA Clone or AA Sequence:	RC201172
Predicted MW:	26.7 kDa
Protein Sequence:	>RC201172 protein sequence Red=Cloning site Green=Tags(s) MASSAASSEHFEEKLHEIFRGLHEDLQGVPERLLGTAGTEEKKKLIRDFDEKQQEANETLAEMEEELRYAP LSFRNPMMSKLRNYRKDLAKLHREVRSTPLTATPGGRGDMKYGIYAVENEHMNRLQSQRAMLLQGTESLN RATQSIERSHRIATETDQIGSEIIEELGEQRDQLERTKSRLVNTSENLSKSRKILRSMSRKVTTNKLLLS IIILLELAAILGGLVYYKFFRSH TRTRPLEQKLISEEDLAANDILDYKDDDDKV
Tag:	C-Myc/DDK
Purity:	> 80% as determined by SDS-PAGE and Coomassie blue staining
Concentration:	>0.05 µg/µL as determined by microplate BCA method
Labeling Method:	Labeled with [U- ¹³ C ₆ , ¹⁵ N ₄]-L-Arginine and [U- ¹³ C ₆ , ¹⁵ N ₂]-L-Lysine
Buffer:	25 mM Tris-HCl, 100 mM glycine, pH 7.3
Storage:	Store at -80°C. Avoid repeated freeze-thaw cycles.
Stability:	Stable for 3 months from receipt of products under proper storage and handling conditions.
RefSeq:	NP_006361
RefSeq Size:	1357
RefSeq ORF:	696
Synonyms:	v-SNARE; VTI1; VTI1-LIKE; vti1-rp1; VTI1L; VTI2
Locus ID:	10490
UniProt ID:	Q9UEU0



[View online »](#)

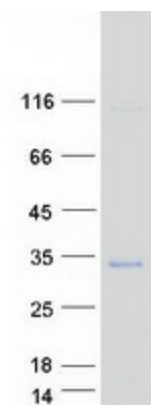
Cytogenetics: 14q24.1

Summary: V-SNARE that mediates vesicle transport pathways through interactions with t-SNAREs on the target membrane. These interactions are proposed to mediate aspects of the specificity of vesicle trafficking and to promote fusion of the lipid bilayers. May be concerned with increased secretion of cytokines associated with cellular senescence.[UniProtKB/Swiss-Prot Function]

Protein Families: Druggable Genome, Transmembrane

Protein Pathways: SNARE interactions in vesicular transport

Product images:



Coomassie blue staining of purified VTI1B protein (Cat# [TP301172]). The protein was produced from HEK293T cells transfected with VTI1B cDNA clone (Cat# [RC201172]) using MegaTran 2.0 (Cat# [TT210002]).