

Product datasheet for PH301142

Protein Phosphatase 1 beta (PPP1CB) (NM_206876) Human Mass Spec Standard

Product data:

Product Type:	Mass Spec Standards
Description:	PPP1CB MS Standard C13 and N15-labeled recombinant protein (NP_996759)
Species:	Human
Expression Host:	HEK293
Expression cDNA Clone or AA Sequence:	RC201142
Predicted MW:	37.2 kDa
Protein Sequence:	>RC201142 protein sequence Red =Cloning site Green =Tags(s) MADGELNVDSLITRLLLEVRGCRPGKIVQMTEAEVRGLCIKSREIFLSQPILLELEAPLKICGDIHGQYTD LLRLFYGGFPPEANYLFLGDYVDRGKQSLETICLLLAYKIKYPENFFLLRGNHECASINRIYGFYDECK RRFNIKLWKTFTDCFNCLPIAAIVDEKIFCCHGGLSPDLQSMEQIRRIMRPTDVPDGLLCDLLWSDPK DVQGWGENDRGVSFTFGADVVSFLNRHDLDLICRAHQVVEDGYEFFAKRQLVTLFSAPNYCGEFDNAGG MMSVDETLMCSFQILKPSEKKAKYQYGGGLNSGRPVTTPRTANPPKKR TRTRPLEQKLISEEDLAANDILDYKDDDDKV
Tag:	C-Myc/DDK
Purity:	> 80% as determined by SDS-PAGE and Coomassie blue staining
Concentration:	50 ug/ml as determined by BCA
Labeling Method:	Labeled with [U- ¹³ C ₆ , ¹⁵ N ₄]-L-Arginine and [U- ¹³ C ₆ , ¹⁵ N ₂]-L-Lysine
Buffer:	100 mM glycine, 25 mM Tris-HCl, pH 7.3. Store at -80°C. Avoid repeated freeze-thaw cycles. Stable for 3 months from receipt of products under proper storage and handling conditions.
RefSeq:	NP_996759
RefSeq Size:	4786
RefSeq ORF:	981
Synonyms:	HEL-S-80p; MP; NSLH2; PP-1B; PP1B; PP1beta; PP1c; PPP1beta; PPP1CD
Locus ID:	5500
Cytogenetics:	2p23.2



[View online »](#)

Summary:

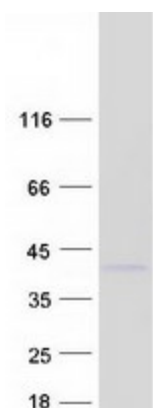
The protein encoded by this gene is one of the three catalytic subunits of protein phosphatase 1 (PP1). PP1 is a serine/threonine specific protein phosphatase known to be involved in the regulation of a variety of cellular processes, such as cell division, glycogen metabolism, muscle contractility, protein synthesis, and HIV-1 viral transcription. Mouse studies suggest that PP1 functions as a suppressor of learning and memory. Two alternatively spliced transcript variants encoding distinct isoforms have been observed. [provided by RefSeq, Jul 2008]

Protein Families:

Druggable Genome, Phosphatase

Protein Pathways:

Focal adhesion, Insulin signaling pathway, Long-term potentiation, Oocyte meiosis, Regulation of actin cytoskeleton, Vascular smooth muscle contraction

Product images:

Coomassie blue staining of purified PPP1CB protein (Cat# [TP301142]). The protein was produced from HEK293T cells transfected with PPP1CB cDNA clone (Cat# [RC201142]) using MegaTran 2.0 (Cat# [TT210002]).