

Product datasheet for PH301136

CRALBP (RLBP1) (NM_000326) Human Mass Spec Standard

Product data:

Product Type:	Mass Spec Standards
Description:	RLBP1 MS Standard C13 and N15-labeled recombinant protein (NP_000317)
Species:	Human
Expression Host:	HEK293
Expression cDNA Clone or AA Sequence:	RC201136
Predicted MW:	36.5 kDa
Protein Sequence:	>RC201136 protein sequence Red=Cloning site Green=Tags(s) MSEGVGTRFRMPVEEQELRAQLQLTTKDHGPFVFGPCSQLPRHTLQKAKDELNEREETREEAVRELQEMV QAQAASGEELAVAVAERVQEKDSGFFLRFRIRARFNVGRAYELLRGYVNFRLQYPELFDLSPEAVRCTI EAGYPGVLSSRDKYGRVVMLFNIENWQSQEITFDEILQAYCFILEKLLENEETQINGFCIIENFKGFTMQ QAASLRTSDLRKMVDMLQDSFPARFKA IHF IHQPWYFTTTYNVVKPFLKSKLLERFVHGDDL SGFYQEI DENILPSDFGGTLPKYDGKAVAEQLFGPQAQAENTAF TRTRPLEQKLI SEEDLAANDILDYKDDDDKV
Tag:	C-Myc/DDK
Purity:	> 80% as determined by SDS-PAGE and Coomassie blue staining
Concentration:	>0.05 µg/µL as determined by microplate BCA method
Labeling Method:	Labeled with [U- ¹³ C ₆ , ¹⁵ N ₄]-L-Arginine and [U- ¹³ C ₆ , ¹⁵ N ₂]-L-Lysine
Buffer:	25 mM Tris-HCl, 100 mM glycine, pH 7.3
Storage:	Store at -80°C. Avoid repeated freeze-thaw cycles.
Stability:	Stable for 3 months from receipt of products under proper storage and handling conditions.
RefSeq:	<u>NP_000317</u>
RefSeq Size:	1752
RefSeq ORF:	951
Synonyms:	CRALBP
Locus ID:	6017



[View online »](#)

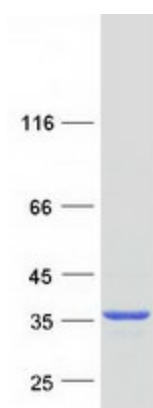
UniProt ID: [P12271](#)

Cytogenetics: 15q26.1

Summary: The protein encoded by this gene is a 36-kD water-soluble protein which carries 11-cis-retinaldehyde or 11-cis-retinal as physiologic ligands. It may be a functional component of the visual cycle. Mutations of this gene have been associated with severe rod-cone dystrophy, Bothnia dystrophy (nonsyndromic autosomal recessive retinitis pigmentosa) and retinitis punctata albescens. [provided by RefSeq, Jul 2008]

Protein Families: Druggable Genome

Product images:



Coomassie blue staining of purified RLBP1 protein (Cat# [TP301136]). The protein was produced from HEK293T cells transfected with RLBP1 cDNA clone (Cat# [RC201136]) using MegaTran 2.0 (Cat# [TT210002]).