

Product datasheet for PH301134

Tropomodulin 1 (TMOD1) (NM_003275) Human Mass Spec Standard

Product data:

Product Type:	Mass Spec Standards
Description:	TMOD1 MS Standard C13 and N15-labeled recombinant protein (NP_003266)
Species:	Human
Expression Host:	HEK293
Expression cDNA Clone or AA Sequence:	RC201134
Predicted MW:	40.6 kDa
Protein Sequence:	>RC201134 protein sequence Red=Cloning site Green=Tags(s)
	MSYRRELEKYRDLDEDKILGALTEEELRTLENELDELDPDNALLPAGLRQKDQTTKAPTGPFKREELLDH LEKQAKEFKDREDLVPYTGKRGKVVWPKQKPLDPVLESVTLEPELEEALANASDAELCDIAAILGMHTL MSNQYYQALSSSSIMNKEGLNSVIKPTQYKVPDEEPNSTDVEETLERIKNNDPKLEEVNLNNIRNIPI PTLKAYAEALKENSYVKKFSIVGTRSNDPVAYALAEMLKENKVLKTLNVESNFISGAGILRLVEALPYNT SLVEMKIDNQSQPLGNKVEMEIVSMLEKNATLLKFGYHFTQQGPRLRASNMMNNNDLVRKRRLADLTGP IIPKCRSGV
	TRTRPLEQKLISEEDLAANDILDYKDDDDKV
Tag:	C-Myc/DDK
Purity:	> 80% as determined by SDS-PAGE and Coomassie blue staining
Concentration:	>0.05 µg/µL as determined by microplate BCA method
Labeling Method:	Labeled with [U- ¹³ C ₆ , ¹⁵ N ₄]-L-Arginine and [U- ¹³ C ₆ , ¹⁵ N ₂]-L-Lysine
Buffer:	25 mM Tris-HCl, 100 mM glycine, pH 7.3
Storage:	Store at -80°C. Avoid repeated freeze-thaw cycles.
Stability:	Stable for 3 months from receipt of products under proper storage and handling conditions.
RefSeq:	NP_003266
RefSeq Size:	3352
RefSeq ORF:	1077
Synonyms:	D9S57E; ETMOD; TMOD
Locus ID:	7111



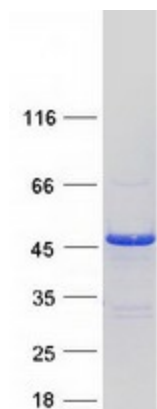
[View online »](#)

UniProt ID: [P28289](#)

Cytogenetics: 9q22.33

Summary: This gene encodes a member of the tropomodulin family. The encoded protein is an actin-capping protein that regulates tropomyosin by binding to its N-terminus, inhibiting depolymerization and elongation of the pointed end of actin filaments and thereby influencing the structure of the erythrocyte membrane skeleton. Multiple transcript variants encoding the same protein have been found for this gene. [provided by RefSeq, Oct 2009]

Product images:



Coomassie blue staining of purified TMOD1 protein (Cat# [TP301134]). The protein was produced from HEK293T cells transfected with TMOD1 cDNA clone (Cat# [RC201134]) using MegaTran 2.0 (Cat# [TT210002]).