

Product datasheet for PH301129

AP2B1 (NM_001030006) Human Mass Spec Standard

Product data:

Product Type:	Mass Spec Standards
Description:	AP2B1 MS Standard C13 and N15-labeled recombinant protein (NP_001025177)
Species:	Human
Expression Host:	HEK293
Expression cDNA Clone or AA Sequence:	RC201129
Predicted MW:	105.5 kDa
Protein Sequence:	>RC201129 representing NM_001030006 Red=Cloning site Green=Tags(s)

MTDSKYFTTNKKGEIFELKAELNNEKKEKRKEAVKKVIAAMTVGKDVSSLPDQVNCMQTDNLELKKLVY
LYLMNYAKSQPDMAIMAVNSFVKDCEDPNPLIRALAVRTMGCIRVDKITEYLCEPLRKCLKDEDPPYVRKT
AAVCVAKLHDINAQMVEDQGFLLDLSRDLIADSNPMVVANAVAALSEISESHPNSNLLDLNPQNKLLTA
LNECTEWGQIFILDCLSNYNPKDDREAQSI CERVTPRLSHANSVAVL SAVKVLKMFLELLPKDSDYYNML
LKKLAPPLVTL SGEPEVQYVALRNINLIVQKRPEILKQEIKVFFVKYNDPIYVKLEKLDIMIRLASQAN
IAQVLAELKEYATEVDVDFVRKAVRAIGRAIKVEQSAERCVSTLLDLIQTKVNYVVQEAI VVIRDIRK
YPNKYESI IATLCENLDSLDEPDARAAMIWIVGEYAERIDNADELLESFLEGFHDESTQVQLTLLTAIVK
LFLKPKSETQELVQVLSLATQSDNPDLRDRGYIWRLLSTDPVTAKEVVLSEKPLISEETDLIEPTLL
DELICHIGSLASVYHKPPNAFVESHGHIRKHLPIHHGSTDAGDSPVGT TATNLEQPQVIPSQGDLLGD
LLNLDLGPPVNPQVSSMQGAVDLLGGGLDSLLGSDLGGGIGGSPAVGQSFIPSSVPATFAPSPTPAVV
SSGLNDLFELSTGIGMAPGGYVAPKAVWLPVAVKAKGLEISGTFTHRQGHYMEMNFTNKALQHMTDFAIQ
FNKNSFGVIPSTPLAIHTPLMPNQSIDVSLPLNTLGPVMKMEPLNQLQVAVKNNIDVFYFSCLIPLNVLF
VEDGKMERQVFLATWKDIPNENELQFQIKECHLNADTVSSKLNQNNVYTI AKRNVVEGQDMLYQSLKLTNG
IWILAELRIQPGNPNYTL SLKCRAPEVVSQYIYQVYDSILKN

TRTRPLEQKLI SEEDLAANDILDYKDDDDKV

Tag:	C-Myc/DDK
Purity:	> 80% as determined by SDS-PAGE and Coomassie blue staining
Concentration:	>0.05 µg/µL as determined by microplate BCA method
Labeling Method:	Labeled with [U- ¹³ C ₆ , ¹⁵ N ₄]-L-Arginine and [U- ¹³ C ₆ , ¹⁵ N ₂]-L-Lysine
Buffer:	25 mM Tris-HCl, 100 mM glycine, pH 7.3
Storage:	Store at -80°C. Avoid repeated freeze-thaw cycles.
Stability:	Stable for 3 months from receipt of products under proper storage and handling conditions.



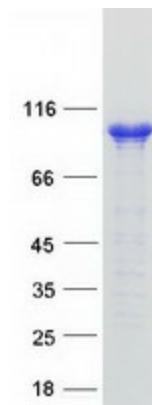
[View online >](#)

RefSeq: [NP_001025177](#)
RefSeq Size: 5772
RefSeq ORF: 2853
Synonyms: ADTB2; AP2-BETA; AP105B; CLAPB1
Locus ID: 163
UniProt ID: [P63010](#), [A0A140VJE8](#), [Q96EL6](#)
Cytogenetics: 17q12

Summary: The protein encoded by this gene is one of two large chain components of the assembly protein complex 2, which serves to link clathrin to receptors in coated vesicles. The encoded protein is found on the cytoplasmic face of coated vesicles in the plasma membrane. Two transcript variants encoding different isoforms have been found for this gene. [provided by RefSeq, Jul 2008]

Protein Families: Druggable Genome
Protein Pathways: Endocytosis, Huntington's disease

Product images:



Coomassie blue staining of purified AP2B1 protein (Cat# [TP301129]). The protein was produced from HEK293T cells transfected with AP2B1 cDNA clone (Cat# [RC201129]) using MegaTran 2.0 (Cat# [TT210002]).