

Product datasheet for PH301128

cleavage stimulation factor (CSTF1) (NM_001324) Human Mass Spec Standard

Product data:

Product Type:	Mass Spec Standards
Description:	CSTF1 MS Standard C13 and N15-labeled recombinant protein (NP_001315)
Species:	Human
Expression Host:	HEK293
Expression cDNA Clone or AA Sequence:	RC201128
Predicted MW:	48.4 kDa
Protein Sequence:	>RC201128 protein sequence Red=Cloning site Green=Tags(s)

MYRTKVGKDRQQLYKLIISQLLYDGYISIANGLINEIKPQSVCAPSEQLLHLIKLGMENDDTAVQYAIG
RSDTVAPGTGIDLEFDADVQTMSPLEASEYETCYVTSKGGPCRATYSRDGQLIATGSADASIKILDTTERM
LAKSAMP I EVMMNETAQNMENHPVIRTYDHYVDEVTCLAFHPTEQILASGSRDYTLKLFDSKPSAKRA
FKYIQEAEMLRISFHPSGDFILVGTQHPTLRLYDINTFQCFVSCNPQDQHTDAICSVNYNSSANMYVTG
SKDGCIKLWDGVSNRCTITFEKAHDGAEVCSAIFSKNSKYILSSGKDSVAKLWEISTGRTLVRVTGAGLS
GRQVHRTQAVFNHTEDYVLLPDERTISLCCWDSRTAERRNLLSLGHNNIVRCIVHSPTNPGFMTCSDDFR
ARFWYRRSTTD

TRTRPLEQKLI SEEDLAANDILDYKDDDDKV

Tag:	C-Myc/DDK
Purity:	> 80% as determined by SDS-PAGE and Coomassie blue staining
Concentration:	>0.05 µg/µL as determined by microplate BCA method
Labeling Method:	Labeled with [U- ¹³ C ₆ , ¹⁵ N ₄]-L-Arginine and [U- ¹³ C ₆ , ¹⁵ N ₂]-L-Lysine
Buffer:	25 mM Tris-HCl, 100 mM glycine, pH 7.3
Storage:	Store at -80°C. Avoid repeated freeze-thaw cycles.
Stability:	Stable for 3 months from receipt of products under proper storage and handling conditions.
RefSeq:	<u>NP_001315</u>
RefSeq Size:	2323
RefSeq ORF:	1293
Synonyms:	CstF-50; CstFp50

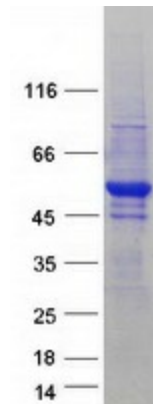


[View online »](#)

Locus ID: 1477
UniProt ID: [Q05048](#)
Cytogenetics: 20q13.2-q13.31

Summary: This gene encodes one of three subunits which combine to form cleavage stimulation factor (CSTF). CSTF is involved in the polyadenylation and 3'end cleavage of pre-mRNAs. Similar to mammalian G protein beta subunits, this protein contains transducin-like repeats. Several transcript variants with different 5' UTR, but encoding the same protein, have been found for this gene. [provided by RefSeq, Jul 2008]

Product images:



Coomassie blue staining of purified CSTF1 protein (Cat# [TP301128]). The protein was produced from HEK293T cells transfected with CSTF1 cDNA clone (Cat# [RC201128]) using MegaTran 2.0 (Cat# [TT210002]).