

Product datasheet for PH301123

ASCL1 (NM_004316) Human Mass Spec Standard

Product data:

Product Type:	Mass Spec Standards
Description:	ASCL1 MS Standard C13 and N15-labeled recombinant protein (NP_004307)
Species:	Human
Expression Host:	HEK293
Expression cDNA Clone or AA Sequence:	RC201123
Predicted MW:	25.5 kDa
Protein Sequence:	>RC201123 protein sequence Red=Cloning site Green=Tags(s) MESSAKMESGGAGQQPQPQPFLPPAACFFATAAAAAAAAAAAAAQSAQQQQQQQQQQAPQLRPAA DGQPSGGGHKSAPKQVKRQRSSPELMRCKRRLNFSGFGYSLPQQQPAAVARRNERERNRVKLVNLGFAT LREHVPNGAANKMSKVELRSAYEYIRALQQLLDEHDAVSAAFQAGVLSPTISPNYSNDLNSMAGSPVS SYSSDEGSYDPLSPEEQELLDFTNWF TRTRPLEQKLI SEEDLAANDILDYKDDDDKV
Tag:	C-Myc/DDK
Purity:	> 80% as determined by SDS-PAGE and Coomassie blue staining
Concentration:	>0.05 µg/µL as determined by microplate BCA method
Labeling Method:	Labeled with [U- ¹³ C ₆ , ¹⁵ N ₄]-L-Arginine and [U- ¹³ C ₆ , ¹⁵ N ₂]-L-Lysine
Buffer:	25 mM Tris-HCl, 100 mM glycine, pH 7.3
Storage:	Store at -80°C. Avoid repeated freeze-thaw cycles.
Stability:	Stable for 3 months from receipt of products under proper storage and handling conditions.
RefSeq:	NP_004307
RefSeq Size:	2490
RefSeq ORF:	708
Synonyms:	ASH1; bHLHa46; HASH1; MASH1
Locus ID:	429
UniProt ID:	P50553



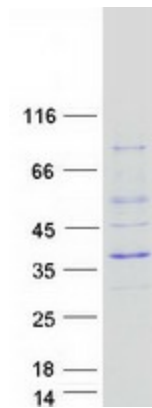
[View online »](#)

Cytogenetics: 12q23.2

Summary: This gene encodes a member of the basic helix-loop-helix (BHLH) family of transcription factors. The protein activates transcription by binding to the E box (5'-CANNTG-3'). Dimerization with other BHLH proteins is required for efficient DNA binding. This protein plays a role in the neuronal commitment and differentiation and in the generation of olfactory and autonomic neurons. Mutations in this gene may contribute to the congenital central hypoventilation syndrome (CCHS) phenotype in rare cases. [provided by RefSeq, Jul 2008]

Protein Families: Druggable Genome, Transcription Factors

Product images:



Coomassie blue staining of purified ASCL1 protein (Cat# [TP301123]). The protein was produced from HEK293T cells transfected with ASCL1 cDNA clone (Cat# [RC201123]) using MegaTran 2.0 (Cat# [TT210002]).