

Product datasheet for PH301111

Cortactin (CTTN) (NM_138565) Human Mass Spec Standard

Product data:

Product Type:	Mass Spec Standards
Description:	CTTN MS Standard C13 and N15-labeled recombinant protein (NP_612632)
Species:	Human
Expression Host:	HEK293
Expression cDNA Clone or AA Sequence:	RC201111
Predicted MW:	57.5 kDa
Protein Sequence:	>RC201111 protein sequence Red=Cloning site Green=Tags(s)

MWKASAGHAVSIAQDDAGADDWETDPDFVNDVSEKEQRWGAKTVQSGHQEHINIHKLRENVFQEHQTLK
EKELETGPKASHGYGGKFGVEQDRMDKSAVGHEYQSKLSKHCSQVDSVRGFGGKFGVQMDRVDQSAVGFE
YQKTEKHASQKDYSSGFGGKYGVQADRVKSAVGFYQKTEKHESQRDYSKGGKYGIDKDKVDKSA
VGFEYQKTEKHESQKDYVKGFGGKFGVQTDRQDKCALGWDHQEKLQLHESQKDYSGGKYGKVDKDRM
DKNASTFEDVTQVSSAYQKTPVPEAVTSKTSNIRANFENLAKEKEQEDRRKAEAEARAQMAKERQEQUEEA
RRKLEEQARAKTQTPPVSPAPQPTTEERLPSSPVYEDAASFKAELSYRGPVSGTEPEPVYSMEAADYREAS
SQQGLAYATEAVYESAEAPGHYPAEDSTYDEYENDLGITAVALYDYQAAGDDEISFPDDIITNIEMIDD
GWWRGVCKGRYGLFPANYVELRQ

TRTRPLEQKLISEEDLAANDILDYKDDDDKV

Tag:	C-Myc/DDK
Purity:	> 80% as determined by SDS-PAGE and Coomassie blue staining
Concentration:	>0.05 µg/µL as determined by microplate BCA method
Labeling Method:	Labeled with [U- 13C6, 15N4]-L-Arginine and [U- 13C6, 15N2]-L-Lysine
Buffer:	25 mM Tris-HCl, 100 mM glycine, pH 7.3
Storage:	Store at -80°C. Avoid repeated freeze-thaw cycles.
Stability:	Stable for 3 months from receipt of products under proper storage and handling conditions.
RefSeq:	NP_612632
RefSeq Size:	3208
RefSeq ORF:	1539



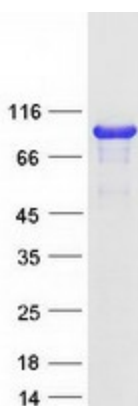
[View online »](#)

Synonyms: EMS1
Locus ID: 2017
UniProt ID: [Q14247](#), [Q53HG7](#), [A0A024R5M3](#), [Q8N707](#)
Cytogenetics: 11q13.3

Summary: This gene is overexpressed in breast cancer and squamous cell carcinomas of the head and neck. The encoded protein is localized in the cytoplasm and in areas of the cell-substratum contacts. This gene has two roles: (1) regulating the interactions between components of adherens-type junctions and (2) organizing the cytoskeleton and cell adhesion structures of epithelia and carcinoma cells. During apoptosis, the encoded protein is degraded in a caspase-dependent manner. The aberrant regulation of this gene contributes to tumor cell invasion and metastasis. Three splice variants that encode different isoforms have been identified for this gene. [provided by RefSeq, May 2010]

Protein Families: Druggable Genome
Protein Pathways: Pathogenic Escherichia coli infection, Tight junction

Product images:



Coomassie blue staining of purified CTTN protein (Cat# [TP301111]). The protein was produced from HEK293T cells transfected with CTTN cDNA clone (Cat# [RC201111]) using MegaTran 2.0 (Cat# [TT210002]).