

Product datasheet for PH301110

GLI1 (NM_005269) Human Mass Spec Standard

Product data:

Product Type:	Mass Spec Standards
Description:	GLI1 MS Standard C13 and N15-labeled recombinant protein (NP_005260)
Species:	Human
Expression Host:	HEK293
Expression cDNA Clone or AA Sequence:	RC201110
Predicted MW:	117.9 kDa
Protein Sequence:	>RC201110 protein sequence Red=Cloning site Green=Tags(s)

MFNSMTPPPISSEYGEPCCLRPLPSQGAPSVGTEGLSGPPFCHQANLMSGPHSYGPARETNSCTEGPLFSS
PRSAVKLTKKRALSISPLSDASLDLQTVIRTSPSSLVAFINSRCTSPGGSYGHLSIGTMSPSLGFPAQMN
HQKGPSPSFGVQPCGPHDSARGGMIHPHQSRGPFPTCQLKSELDMLVGKREEPLEGDMSSPNSTGIQDP
LLGMLDGREDLEREEKREPEVSVYETDCRWDGCSQEFDSQEQLVHHINSEHIHGERKEFVCHWGGCSREL
PFKAQYMLVVHMRRHTGEKPHKCTFEGCRKSYSRLENLKTHLRSHTGEKPYMCEHEGCSKAFSNASDRAK
HQNRTHSNEKPYVCKLPGCTKRYTDPSSLRKHVKTVHGPDHVTKRHRGDGGLPRAPSI STVEPKREREG
GPIREESRLTVEGAMKQPSPGAQSSCS DHSPAGSAANTDSGEMTGNAGGSTEDLSSLDGEGPCIAGT
GLSTLRLENLRDLQHLQLRPIGTRGLKLP SL SHTGTTVSRRVGPPVSLERRSSSSSSISSAYTVSRSS
LASPFPPGSPENGASSLPGLMPAQHYLLRARYASARGGGT SPTAASSLDRI GGLPMPWPWSRAEYPGYN
PNAGVTRRASDPAQAADRPAPARVQRFKSLGCVHTPPTVAGGGQNFDPYLP TSVYSPQPPSITENAAMD
RGLQEEPEVGTSMVGSGLNPMDFPPTDTLGYGGPEGAAAEPYGARGPGSLPLGPGPPTNYGPNPCPQQA
SYPDPTQETWGEFSPHSLYPGPKALGGTYSQCPRL EHYQVQVQKPEQGC PVGSDSTGLAPCLNAHPSEG
PPHPQPLFSHYQPSPPPQYLQSGPYTQPPPDYLPSEPRCLDFD SPTHSTGQLKAQLVCNYVQSQQELLW
EGGGREDAPAQEPSYQSPKFLGGSQVSPSRAPVNTYGPFGPNLPNHKSGSYPTSPCHENFVVGANR
ASHRAAAPRLLPPLPTCYGPLKVGGTNPSCGHPEVGR LGGGPALYPPPEGVQVCNPLDSL DL DNTQLDFV
AILDEPQGLSPPPSHDQRGSSGHTPPPSGPPNMAVGNMSVLLRSLPGETEFLNSSA

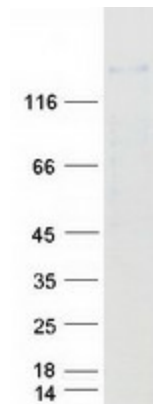
TRTRPLEQKLISEEDLAANDILDYKDDDDKV

Tag:	C-Myc/DDK
Purity:	> 80% as determined by SDS-PAGE and Coomassie blue staining
Concentration:	>0.05 µg/µL as determined by microplate BCA method
Labeling Method:	Labeled with [U- 13C6, 15N4]-L-Arginine and [U- 13C6, 15N2]-L-Lysine
Buffer:	25 mM Tris-HCl, 100 mM glycine, pH 7.3



[View online »](#)

Storage:	Store at -80°C. Avoid repeated freeze-thaw cycles.
Stability:	Stable for 3 months from receipt of products under proper storage and handling conditions.
RefSeq:	NP_005260
RefSeq Size:	3618
RefSeq ORF:	3318
Synonyms:	GLI; PAPA8; PPD1
Locus ID:	2735
UniProt ID:	P08151
Cytogenetics:	12q13.3
Summary:	This gene encodes a member of the Kruppel family of zinc finger proteins. The encoded transcription factor is activated by the sonic hedgehog signal transduction cascade and regulates stem cell proliferation. The activity and nuclear localization of this protein is negatively regulated by p53 in an inhibitory loop. Multiple transcript variants encoding different isoforms have been found for this gene. [provided by RefSeq, May 2009]
Protein Families:	Adult stem cells, Cancer stem cells, Druggable Genome, Embryonic stem cells, ES Cell Differentiation/IPS, Stem cell relevant signaling - DSL/Notch pathway, Transcription Factors
Protein Pathways:	Basal cell carcinoma, Hedgehog signaling pathway, Pathways in cancer

Product images:

Coomassie blue staining of purified GLI1 protein (Cat# [TP301110]). The protein was produced from HEK293T cells transfected with GLI1 cDNA clone (Cat# [RC201110]) using MegaTran 2.0 (Cat# [TT210002]).